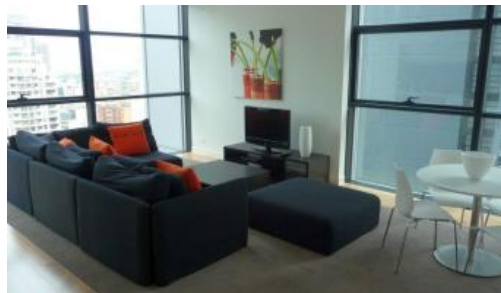




**L28, 101 Bathurst Street, Sydney**



## DEPOSIT TAKEN - CONTACT AGENT

Spacious one bedroom furnished executive apartment at Lumiere Residences

Furnished one bedroom apartment, south west facing located on level 28 of the Lumiere Residence building.

Apartment features timber floors throughout with carpet in the bedroom, state of the art modern kitchen facilities with dishwasher, grand bathroom, floor to ceiling glass windows, internal laundry with dryer.

- Electricity included in the rent
- Unlimited access to Club Lumiere facilities
- 24-hour concierge reception
- Colour audiovisual intercom
- Dedicated internal laundry space
- Dramatic three-storey glass atrium lobby
- First class spacious & well equipped gym
- Five high-speed 'intelligent' elevators
- Full height doors & tinted windows

For further information or to inspect, please call Shalini Vashistha on 0421 640 010 or 8823 8818

\*Photographs used may be indicative.

The above information provided has been furnished to us by the vendor/s. We have not verified whether or not that information is accurate and do not have any belief in one way or the other in its accuracy. We do not accept any responsibility to any person for its accuracy and do no more than pass it on. All interested parties should make and rely upon their own inquiries in order to determine whether or not this information is in fact accurate.

1 1

**Price**

P.O.A.

**Property Type**

Rental

**Property ID**

888

## Agent Details

William Chen - 0430 026 436  
william@greenciff.com.au

## Office Details

Greenciff Sydney Kent St  
Level 10/488 Kent Street Sydney NSW  
2000 Australia  
02 8823 8818

**greenciff**  
Inner city specialists