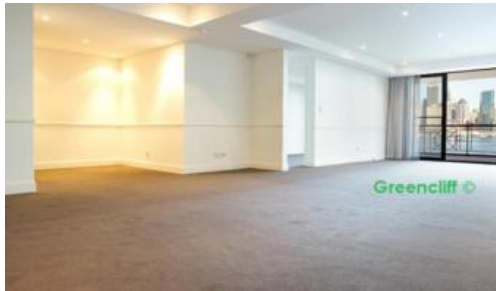


Leased

Greycliff ©

Kirribilli



"GREENCLIFFE" THREE BEDROOM APARTMENT WITH DOUBLE LUG

A perfect residence situated in the heart of Kirribilli, positioned under the ambience of the Sydney Harbour Bridge & gazing directly towards the Sydney Opera House.

Set in the exclusive Greencliffe development located at the beginning of Kirribilli Avenue, this expansive apartment offers high standard quality fittings and fixtures, reverse cycle air conditioning, internal alarm, an exclusive pool with mood lighting on the ceiling, a double lock up garage. Don't forget you will also have prime viewing of annual festivities held on the harbour.

The three bedrooms are equipped with ensuites and all open out onto the expansive balcony that runs the entire length of the apartment. Gourmet kitchen is equipped with Miele appliances including a gas cook top and dishwasher plus generous cupboard space.

Apartment includes undercover security lock-up garage & full access to the building's facilities.

For more information, please contact Vicky Ye on 0423 655 619

The above information provided has been furnished to us by the vendor/s. We have not verified whether or not that information is accurate and do not have any belief in one way or the other in its accuracy. We do not accept any responsibility to any person for its accuracy and do no more than pass it on. All interested parties should make and rely upon their own inquiries in order to determine whether or not this information is in fact accurate.

🛏 3 🚿 3 🚗 2

Price	\$1750 p/w
Property Type	Rental
Property ID	828

Agent Details

Vincent Phang - 02 9199 6557
vincent@greycliff.com.au

Office Details

Greycliff Sydney Kent St
Level 10/488 Kent Street Sydney NSW
2000 Australia
02 8076 8006

greycliff
Inner city specialists