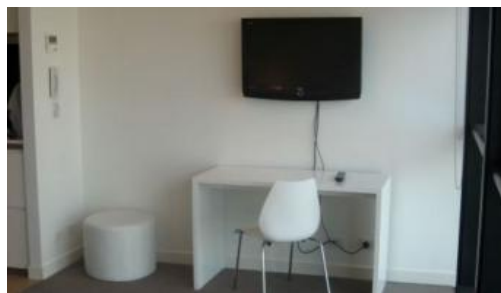


Leased



**L34, 101 Bathurst Street, Sydney**



**INSPECT: THURSDAY 22ND JANUARY 4.30 - 4.45AM**

This sought after furnished studio apartment on level 34 and is on the South Eastern corner of Lumiere.

The apartment has been furnished by the renowned interior design team at Spence and Lyda.

The studio features

- Roughly 20sqm with built in robe
- Modern kitchen & bathroom facilities
- Shared laundry with only one other apartment
- Electricity included in your rent.
- Full access to Club Lumiere and building facilities

Facilities include access to spectacular indoor/outdoor 50 & 20 metre pool, sauna, spa, gym, function room & 2 cinemas.

For further information or to inspect, please contact Michael Lo on 0401 973 703 or 8823 8818.

(\*\*Photos may be indicative)

The above information provided has been furnished to us by the vendor/s. We have not verified whether or not that information is accurate and do not have any belief in one way or the other in its accuracy. We do not accept any responsibility to any person for its accuracy and do no more than pass it on. All interested parties should make and rely upon their own inquiries in order to determine whether or not this information is in fact accurate.

 1

**Price**

\$580 p/w

**Property Type**

Rental

**Property ID**

802

**Agent Details**

William Chen - 0430 026 436

[william@greenciff.com.au](mailto:william@greenciff.com.au)

**Office Details**

Greenciff Sydney Kent St

Level 10/488 Kent Street Sydney NSW

2000 Australia

02 8823 8818

**greenciff**  
Inner city specialists