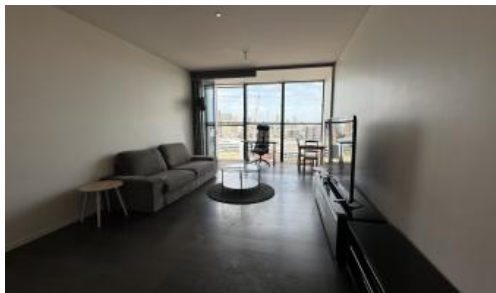


Just Listed



2105, 18 Park Lane, Chippendale



STYLISH ONE-BEDROOM WITH STUNNING VIEWS IN CENTRAL PARK – FURNISHED + BILLS INCLUDED

Please meet at our office at 5 Carlton Street, Chippendale a few minutes before to register and inspect.

“The Mark is the future of vibrant inner city living and a shining example of all that advanced technologies and bold imaginations can contribute to modern and sustainable living”

Located at Central Park Chippendale, The Mark has direct access to a fully equipped gymnasium, an elevated outdoor pool and on your doorstep is an expansive tree lined park named Chippendale Green. Fashionable retail outlets, a Woolworths supermarket and various cafes and eateries.

Moments to Central station, buses and surrounding Universities makes living at Central Park the ultimate in downtown living.

The Mark is the ultimate lifestyle precinct.

The apartments boast intelligent and lifestyle-savvy interiors, features

- Ducted air conditioning
- Loggia for indoor/outdoor living
- Fridge and washer/dryer included

 1  1  1

Price Level 21 | \$950 PW
Property Type Rental
Property ID 7937

Inspection Times

Sat 13 Jun, 12:00 PM - 12:15 PM

Agent Details

Daniel Ho - 0424 089 868
daniel@greenciff.com.au
Raymond Wijaya - 0433 668 648
raymond@greenciff.com.au

Office Details

Greenciff Central Park Office
101/5 Carlton Street Chippendale NSW
2008 Australia
02 9199 6555

