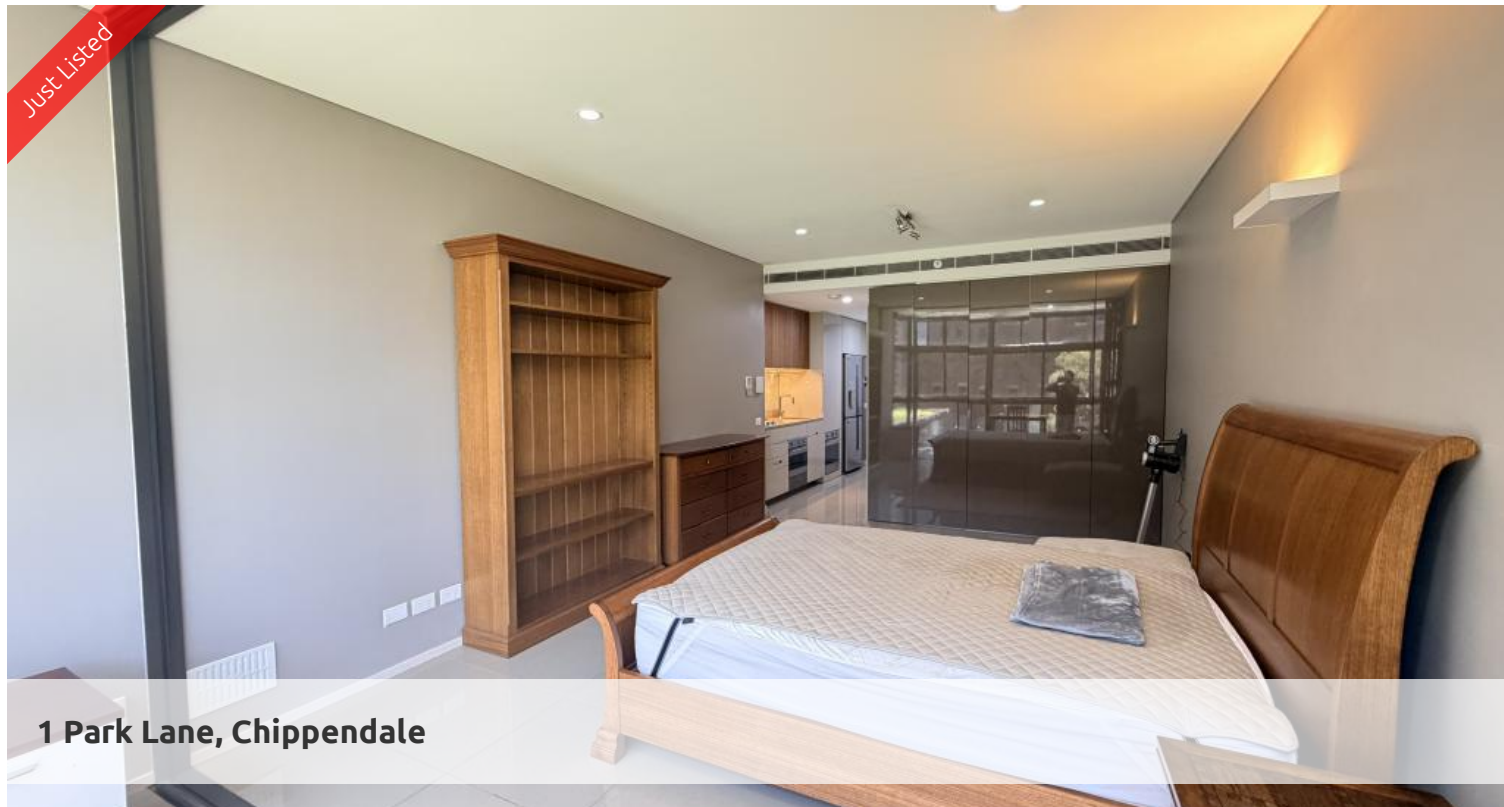


Just Listed



1 Park Lane, Chippendale



## LEVEL 2 · MODERN & FURNISHED ONE BEDROOM SUITE · CENTRAL PARK LIVING

**Please meet at our office at 5 Carlton St, Chippendale a few minutes before to register and inspect.**

Live in one of Sydney's most iconic urban communities. One Central Park delivers the perfect blend of luxury, lifestyle and convenience—surrounded by beautiful parklands, world-class dining, boutique shopping and effortless transport connections.

This stunning furnished suite offers intelligently designed interiors and access to resort-style amenities, creating an exceptional city living experience.

### Apartment Features

- Stylish, modern interiors with quality stainless steel appliances
- Furnished for easy move-in
- Open-plan layout designed for comfort and functionality
- Floor-to-ceiling glazing enhancing light and space
- Security building with 24-hour concierge
- Storage cage included in the basement

### Resort-Style Amenities

- Fully equipped fitness centre with pool, gym & spa
- Exclusive rooftop BBQ area & spa
- Five-level shopping centre with Woolworths, eateries & retail
- Landscaped parklands and Central Park Mall at your doorstep

🛏 1 🚿 1

<b>Price</b>	\$850 pw
<b>Property Type</b>	Rental
<b>Property ID</b>	7718

### Inspection Times

Sat 29 Nov, 1:00 PM - 1:20 PM

### Agent Details

Daniel Ho - 0424 089 868  
daniel@greenciff.com.au

### Office Details

Greenciff Central Park Office  
101/5 Carlton Street Chippendale NSW  
2008 Australia  
02 9199 6555

**greenciff**  
Inner city specialists