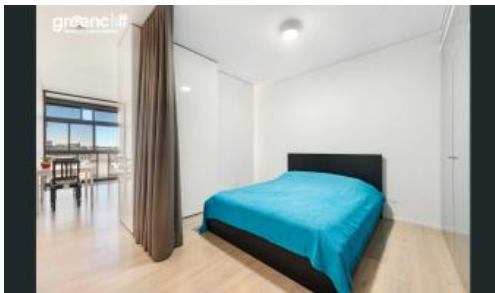


Leased

8 Park Lane, Chippendale

greenciff  
Inner city specialists



## LEVEL 12 | MODERN & FURNISHED ONE-BEDROOM SUITE WITH CITY VIEWS | ONE CENTRAL PARK

**Please meet at our office at 5 Carlton Street, Chippendale a few minutes before the inspection to register.**

Experience inner-city living at its finest in this stylish Level 12 one-bedroom suite within the iconic One Central Park development. Combining sleek design with natural surroundings, this apartment offers premium finishes, stunning views, and access to world-class amenities.

### Apartment Features:

- Modern kitchen equipped with stainless steel appliances
- Spacious living area with floor-to-ceiling windows showcasing city, district, or park views
- Fridge and washer/dryer included for convenience
- Timber flooring in living areas and plush carpet in the bedroom
- Ducted air conditioning for year-round comfort
- Secure building with 24-hour concierge and intercom system

### Building & Lifestyle Amenities:

- Fully equipped fitness centre including pool, gymnasium, and spa
- Rooftop BBQ area and spa offering breathtaking panoramic views
- Sustainable 6-Star Green Star-rated development with living vertical gardens
- Onsite five-level shopping centre with Woolworths, cafes, and retail outlets
- Surrounded by more than 30,000 sqm of lush parklands and public spaces

🛏 1 🚿 1

### Price

DEPOSIT TAKEN -  
INSPECTION CANCELLED

### Property Type

Rental

### Property ID

7673

### Agent Details

Daniel Ho - 0424 089 868  
daniel@greenciff.com.au

### Office Details

Greenciff Central Park Office  
101/5 Carlton Street Chippendale NSW  
2008 Australia  
02 9199 6555

greenciff  
Inner city specialists