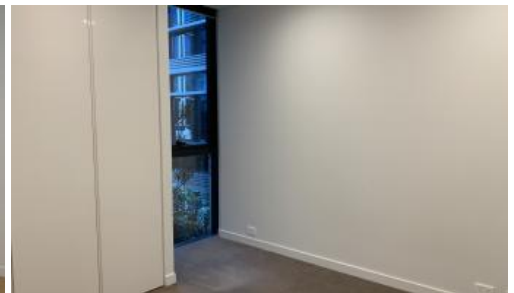




1 Chippendale Way, Chippendale



LEVEL 9 | MODERN ONE-BEDROOM SUITE WITH PARK VIEWS | ONE CENTRAL PARK

Please meet at our office at 5 Carlton Street, Chippendale a few minutes before the inspection to register.

Experience inner-city living at its finest in this beautifully appointed Level 9 one-bedroom suite within the iconic One Central Park development. Surrounded by lush parklands and elevated urban design, this apartment blends contemporary comfort with breathtaking views and premium amenities.

Apartment Features:

- Near-new, open-plan layout with timber and tiled flooring throughout
- Modern kitchen featuring stainless steel appliances, stone benchtops, and ample storage
- Fridge and washer/dryer included for your convenience
- Bright living space with floor-to-ceiling windows offering city, district, or park views
- Contemporary bathroom with quality fixtures
- Secure building with 24-hour concierge and intercom security
- Access to ducted air conditioning and smart design features

Building & Lifestyle Amenities:

- Resort-style fitness centre with swimming pool, gymnasium, and spa
- Sustainable, 6-Star Green Star rated development with living vertical gardens
- Convenient onsite five-level shopping centre including Woolworths, cafés, and retail outlets

1 1

Price DEPOSIT TAKEN -
INSPECTION CANCELLED

Property Type Rental

Property ID 7662

Agent Details

Daniel Ho - 0424 089 868
daniel@greenciff.com.au

Office Details

Greenciff Central Park Office
101/5 Carlton Street Chippendale NSW
2008 Australia
02 9199 6555

greenciff
Inner city specialists