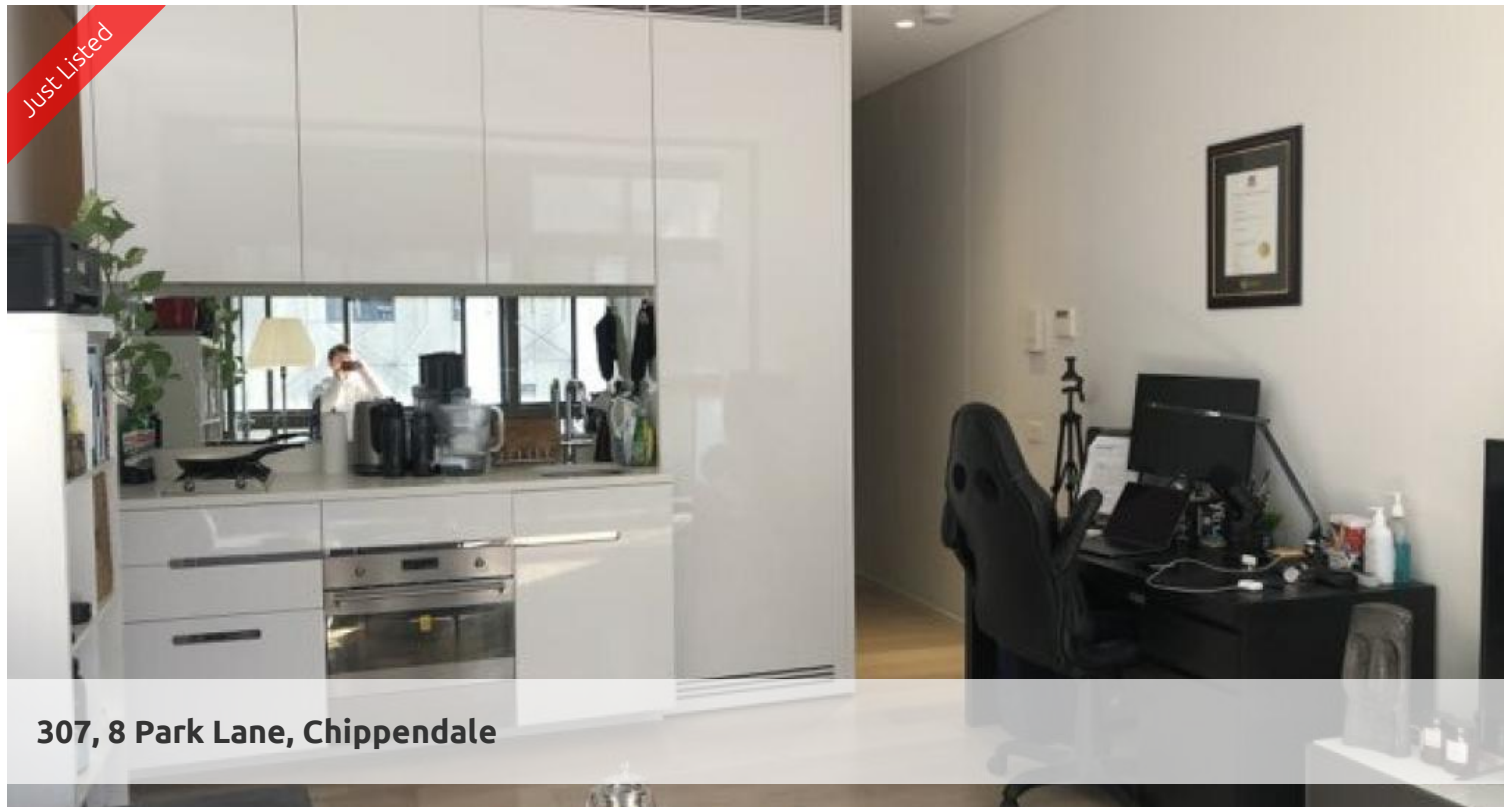


Just Listed



307, 8 Park Lane, Chippendale



## MODERN & UNFURNISHED SUITE ONE BEDROOM IN CENTRAL PARK

**Please meet at our office at 5 Carlton St, Chippendale a few minutes before to register and inspect.**

Greencliff - Official On-Site Rental Management Team for Central Park!

One Central Park is inner city living at its best!

Enjoy the convenience of shopping, entertainment, dining and transport right at your doorstep. Built around a beautiful park, One Central Park is the perfect combination of luxury meeting nature.

Rich in amenities, this Central Park development features:

- Luxury apartments with stainless steel appliances
- Security building with 24 hour concierge
- Fitness centre with pool, gymnasium & spa
- Bonus of a rooftop BBQ area & spa
- 6 star green rated development
- 5 level shopping centre with Woolworths
- City, district or park views from all apartments
- All apartments will have a storage cage in the basement

For further information or to inspect, please contact Daniel Ho on 0424 089 868 or 9199 6555.

**\*\* images used maybe indicatives only\*\***

The above information provided has been furnished to us by the vendor/s. We have not verified whether or not that information is accurate and do not have any belief in one way or the other in its accuracy. We do not accept any responsibility to any person for its accuracy and do no more than pass it on. All interested parties should make and rely upon their own inquiries in order to determine whether or not this information is in fact accurate.

1 1

### Price

307, 8 Park Lane | \$850 PW - UNFURNISHED

### Property Type

Rental

### Property ID

7570

### Inspection Times

Sat 26 Jul, 12:00 PM - 12:30 PM

### Agent Details

Daniel Ho - 0424 089 868  
daniel@greencliff.com.au

### Office Details

Greencliff Central Park Office  
101/5 Carlton Street Chippendale NSW  
2008 Australia  
02 9199 6555

**greenc** **ff**  
Inner city specialists