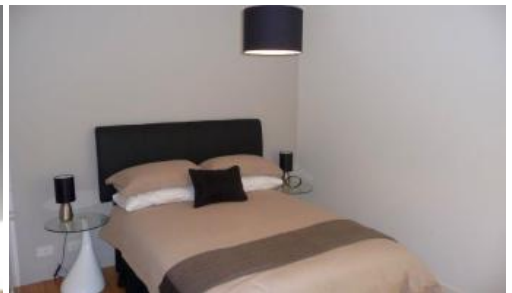




**L34, 101 Bathurst Street, Sydney**



#### DEPOSIT TAKEN - CONTACT AGENT

This beautifully presented one bedroom suite on level 34 of the Lumiere building is larger than a conventional studio and intelligently designed with completely separate bedroom and ensuite.

You will love:

- Spacious combined lounge and dining area which enjoys city and district views
- Open plan kitchen with gas cooking and dishwasher
- Floor to ceiling windows
- Chic bathroom

The Lumiere Residences features 2 levels of private residential facilities including a 50 metre swimming pool spanning indoor to outdoor, a comprehensive first class gym and 24 hour Concierge

For further information or to inspect, please call Shalini Vashistha 0421 640 010 or 8823 8818

\*Photographs used may be indicative.

The above information provided has been furnished to us by the vendor/s. We have not verified whether or not that information is accurate and do not have any belief in one way or the other in its accuracy. We do not accept any responsibility to any person for its accuracy and do no more than pass it on. All interested parties should make and rely upon their own inquiries in order to determine whether or not this information is in fact accurate.

1 1

**Price**  
**Property Type**  
**Property ID**

P.O.A.  
Rental  
753

#### Agent Details

William Chen - 0430 026 436  
william@greenciff.com.au

#### Office Details

Greenciff Sydney Kent St  
Level 10/488 Kent Street Sydney NSW  
2000 Australia  
02 8076 8006

**greenciff**  
Inner city specialists