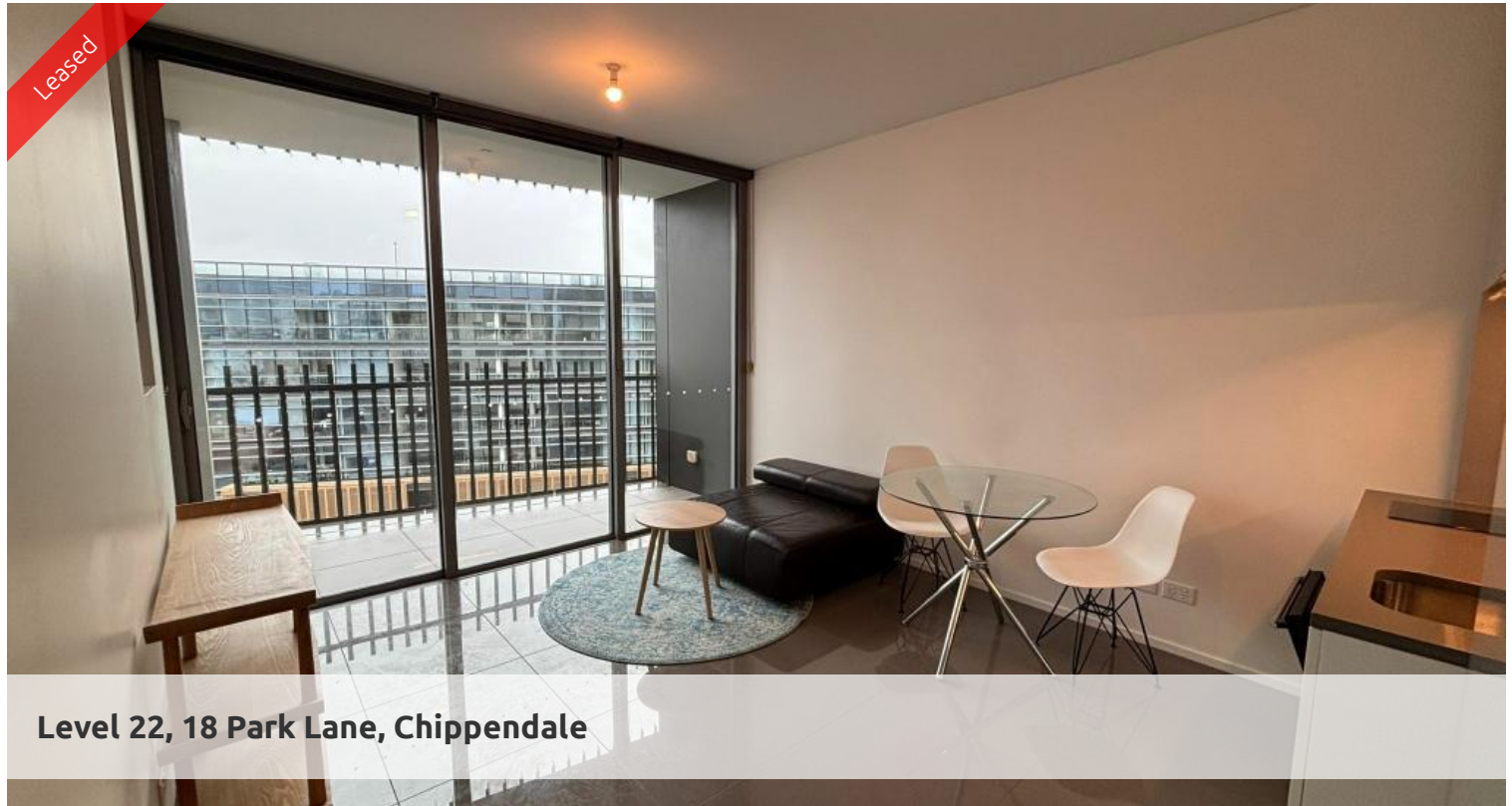


Leased



Level 22, 18 Park Lane, Chippendale



## MODERN & UNFURNISHED SUITE ONE BEDROOM WITH BILLS INCLUDED IN CENTRAL PARK

**Please meet at our office at 5 Carlton Street, Chippendale a few minutes before to register and inspect.**

"The Mark is the future of vibrant inner city living and a shining example of all that advanced technologies and bold imaginations can contribute to modern and sustainable living"

Located at Central Park Chippendale, The Mark has direct access to a fully equipped gymnasium, an elevated outdoor pool and on your doorstep is an expansive tree lined park named Chippendale Green. Fashionable retail outlets, a Woolworths supermarket and various cafes and eateries such as Din Tai Fung available to your heart's content.

Moments to Central station, buses and surrounding Universities makes living at Central Park the ultimate in downtown living.

The Mark is the ultimate lifestyle precinct.

The apartments boast intelligent and lifestyle-savvy interiors, features

- Ducted air conditioning
- Loggia for indoor/outdoor living
- Fridge and washer/dryer included
- European kitchen appliances/stone bench tops
- The latest bathroom fittings and design
- Selection of timber/tiled flooring to the living areas/carpeted bedrooms
- Parking space to selected apartments
- Security intercom system

The Mark offers

The Mark is situated on the rooftop with a spa, terrace spaces to relax

1 bed 1 bath

**Price**

Level 22 | DEPOSIT TAKEN -  
INSPECTION CANCELED

**Property  
Type**

Rental

**Property  
ID**

7522

### Agent Details

Daniel Ho - 0424 089 868  
daniel@greenciff.com.au

### Office Details

Greencliff Central Park Office  
101/5 Carlton Street Chippendale NSW  
2008 Australia  
02 9199 6555

**greenciff**  
Inner city specialists