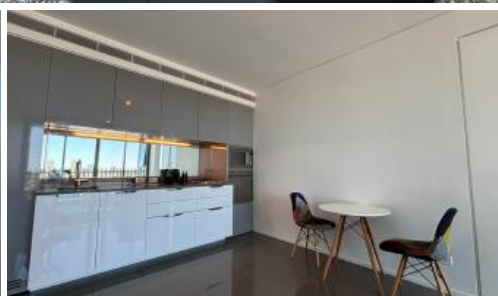


Just Listed



18 Park Lane, Chippendale



## Sleek Apartment in in Prime Chippendale Location

**Please meet at our office 101/5 Carlton Street, Chippendale a few minutes before to register and inspect.**

Located in the heart of Chippendale, The Mark offers unbeatable inner-city living with walking distance to UTS, the University of Sydney, multiple bus stops, Spice Alley, Central Park Mall, and a wide range of shops, cafes, and restaurants.

### Apartment Features:

- Proper one bedroom with floor to ceiling window
- Open-concept living space seamless flows to entertainer's terrace
- Tile flooring, carpeted bedroom
- Gas kitchen with premium appliance, includes: fridge, microwave, oven, dishwasher
- Sleek bathroom with shower screen
- Ducted air conditioning
- Internal laundry with washing machine and dryer
- 12 hour concierge, security and parcel collection service

\*All information including photos contained herein is gathered from sources we consider to be reliable, however, we cannot guarantee or give any warranty to the information provided. Any interested persons are advised to make their own enquiries and satisfy themselves in all respects.

For further information or to register your interest please contact Daniel Ho on 0424 089 868 or 9199 6555.

🛏 1 🚿 1 🚗 1

### Price

LEVEL 18 | \$930 PW -  
FURNISHED

### Property Type

Rental

**Property ID 7488**

### Agent Details

Daniel Ho - 0424 089 868  
daniel@greenciff.com.au

### Office Details

Greenciff Central Park Office  
101/5 Carlton Street Chippendale NSW  
2008 Australia  
02 9199 6555

**greenciff**  
Inner city specialists

The above information provided has been furnished to us by the vendor/s. We have not verified whether or not that information is accurate and do not have any belief in one way or the other in its accuracy. We do not accept any responsibility to any person for its