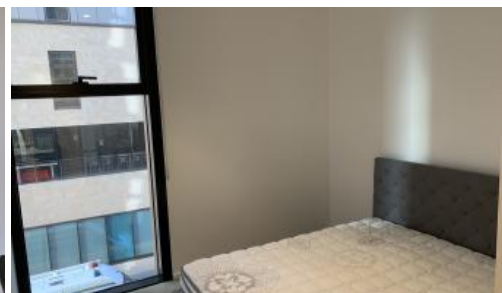


Just Listed



202/8 Central Park Ave, Chippendale



Urban Living in the Heart of Chippendale!

🛏 1 🚿 1

Please meet at our office 101/5 Carlton Street, Chippendale a few minutes before to register and inspect.

Situated in the vibrant heart of Chippendale, Connor is within easy walking distance of the University of Technology Sydney (UTS), the University of Sydney, Broadway Shopping Centre, Chinatown, Central Station, and the major bus interchange. Residents enjoy immediate access to the popular 'Spice Alley'—a dynamic laneway dining precinct along with Central Park Mall, featuring Woolworths, boutique fashion retailers, a food court, and a variety of acclaimed cafes and restaurants.

This location is enriched by stylish retail outlets and a wide range of eateries, making everyday convenience a part of life. With major transport links and leading universities just moments away, Connor at Central Park represents the pinnacle of inner-city living in Sydney.

Apartment Features:

- Proper one bedroom with floor to ceiling window
- Open-concept living space seamless flows to entertainer's terrace
- Spacious glass-enclosed balcony
- Tile flooring, carpeted bedroom
- Gas kitchen with premium appliance, includes: fridge, microwave, oven, dishwasher
- Sleek bathroom with shower screen
- Ducted air conditioning
- Internal laundry with washing machine and dryer
- 12 hour concierge, security and parcel collection service
- Facilities: gym & rooftop terrace

Price FURNISHED & BILLS INCLUDED

Property Type Rental
Property ID 7483

Inspection Times
Tue 20 May, 3:00 PM - 3:30 PM

Agent Details
Daniel Ho - 0424 089 868
daniel@greenciff.com.au

Office Details
Greenciff Central Park Office
101/5 Carlton Street Chippendale NSW
2008 Australia
02 9199 6555

greenciff
Inner city specialists