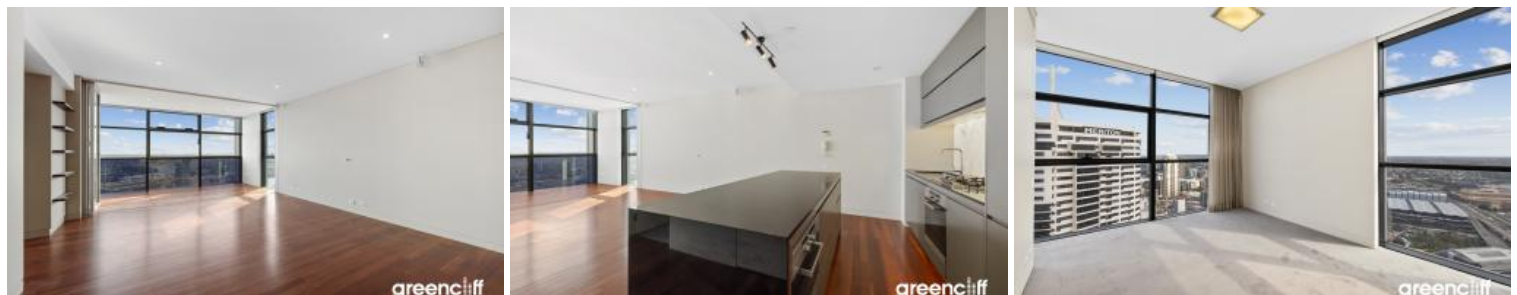




101 Bathurst Street, Sydney



Gorgeous Darling Harbour Views and beyond...

Perch high on level 51 is this grand 3 bedroom delight at Lumiere Residence.

Fabulously fitted out and designed with abundance of natural lights.. these are all the comforts and treasures to ensure you feel at home :-

- Large combined lounge & dining areas
- Gourmet stone bench kitchen, with European appliances,
- Double sized bedrooms, master bedroom with ensuite and spa, all rooms with views across Botany Bay,
- Large winter garden overlooking the ever gorgeous Darling Harbour, perfect for entertaining,
- 2 x basement car spaces.
- Timber flooring & carpet to bedrooms
- Intercom system/Air conditioning

The Lumiere Residences features 2 levels of private residential facilities including a 50 meter swimming pool spanning indoor to outdoor, a comprehensive first class gym, yoga/games room, 2 cinemas, meeting area and 24 hour concierge/security.

Living in Lumiere is all about giving residents the distinct advantage of convenience, such as finding something to do as close as "downstairs" in Regent's Place own restaurants, or the city's cinema precinct.

* images might be indicatives only*

3 2 2

Price Spectacular Harbour Views |
\$1900 PW

Property Type Rental

Property ID 7424

Agent Details

Tammy (Rungnapa) Kanittanon - 0431 511 907 tammy@greenciff.com.au

Office Details

Greenciff Sydney Kent St
Level 10/488 Kent Street Sydney NSW
2000 Australia
02 8076 8006

greenciff
Inner city specialists

The above information provided has been furnished to us by the vendor/s. We have not verified whether or not that information is accurate and do not have any belief in one way or the other in its accuracy. We do not accept any responsibility to any person for its accuracy and do no more than pass it on. All interested parties should make and rely upon their own inquiries in order to determine whether or not this information is in fact accurate.