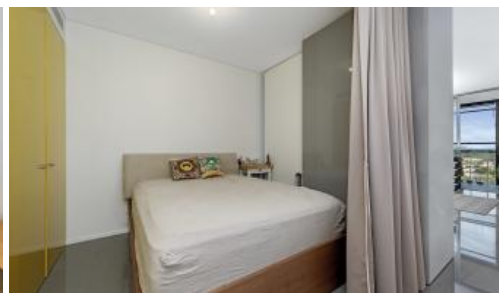


Sold

1317, 18 Park Lane, Chippendale



Exceptional high level apartment with amazing views

Experience city living at its finest in this remarkable one bedroom suite apartment, boasting uninterrupted westward views. Revel in magnificent sunsets and sweeping panoramic vistas that stretch from Botany Bay to the Anzac Bridge, with verdant park views below.

Nestled amidst lush parks, vibrant cafes, acclaimed restaurants, and a bustling shopping center, this residence offers unparalleled convenience. A leisurely stroll will lead you to the heart of Sydney CBD, Spice Alley, esteemed educational institutions like Sydney University, UTS, and TAFE, cultural gems such as the White Rabbit Gallery, and iconic landmarks including Darling Harbour and Central Station.

Property Highlights:

- Enclosed balcony/winter garden with bi-folding doors seamlessly extending the living area
- Well-appointed open-plan kitchen complete with gas cooking, stone-top kitchen island and premium appliances
- Spacious bedroom with built-in robes
- Ducted conditioning, internal laundry with plenty of cabinetry
- Secure building with intercom system, lift access, and 24-hour concierge
- Exclusive resident amenities including a world-class gym with pool and spa
- The rooftop garden beckons with BBQ facilities and a Jacuzzi, perfect for hosting memorable gatherings
- Central Park Mall at your doorsteps, plenty of cafes and restaurants are within reach

On behalf of Greencliff Realty and the owners, we are excited to invite you to one of our upcoming open homes. Alternatively, feel free to contact William Chen at 0430 026 436 to arrange a private inspection.

🛏 1 🚿 1 📏 46 m2

Price	SOLD for \$610,000
Property Type	Residential
Property ID	7244
Land Area	46 m2

Agent Details

Sharon Jing - 0420 978 303
sharon@greencliff.com.au
William Chen - 0430 026 436
william@greencliff.com.au

Office Details

Greencliff Central Park Office
101/5 Carlton Street Chippendale NSW
2008 Australia
02 9199 6555

greenc **ff**
Inner city specialists