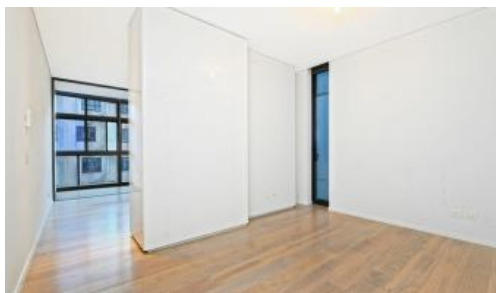
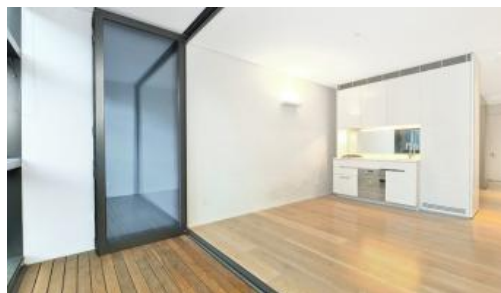


Sold

1110, 8 Park Lane, Chippendale



High-End One Bedroom in Central Park – Perfect for Investors & Families

Positioned high on the 11th floor of a highly sought-after building, this smartly designed, sun-drenched apartment is bathed in natural light and expansive spaces, offering a stylish and convenient lifestyle. Impeccably crafted in the heart of Sydney's creative and educational hubs, this one-bedroom home features exquisite finishes, serene interiors, and a spacious winter garden balcony perfect for entertaining, with stunning views of the city's northern skyline.

Property Highlights:

- Open-plan living and dining area maximizes usable floor space
- Bi-fold glass-to-ceiling doors extend out to a versatile winter garden that can be used as a study or entertainment area
- Engineered flooring, high ceilings
- Well-appointed and streamlined stone and gas kitchen
- Spacious bedroom with a panel of floor-to-ceiling windows and built-in robes
- Internal laundry, ducted A/C
- Secure building with intercom entry, lift access, and 24/7 concierge
- Exclusive amenities include a spa and rooftop terrace, with residents having access to an infinity pool and indoor gym

With its unbeatable location - seconds away from Woolworths, retail shops, restaurants, and cinema located in Central Park Mall, Kensington Street & Spice Alley; minutes from Central Station, UTS & University of Sydney—this immaculate city pad is an opportunity not to be missed.

On behalf of Greencliff Realty and the owners, we are excited to invite you to one of our upcoming open homes. Alternatively, feel free to contact William Chen on 0430 026 436 to arrange a private inspection.

🛏 1 🚿 1 📏 51 m2

Price

SOLD

Property Type

Residential

Property ID

7184

Land Area

51 m2

Agent Details

William Chen - 0430 026 436

william@greencliff.com.au

Sharon Jing - 0420 978 303

sharon@greencliff.com.au

Office Details

Greencliff Central Park Office

101/5 Carlton Street Chippendale NSW

2008 Australia

02 9199 6555

greenc **ff**
Inner city specialists