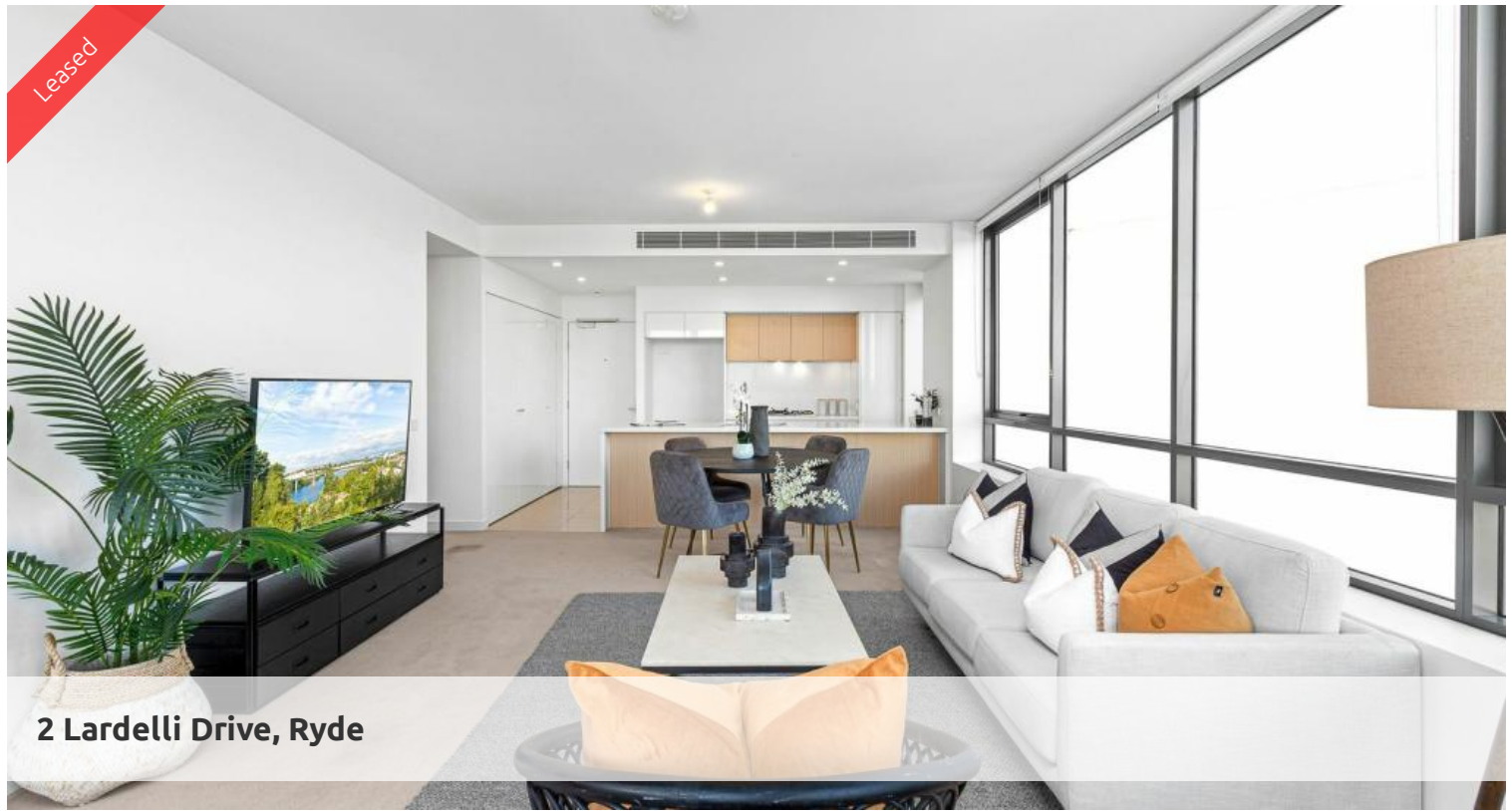


Leased



2 Lardelli Drive, Ryde



Ultra Sleek & Modern 2 bedroom Apartment

This apartment is meticulously designed, with stunning fittings and finishes. Two bedrooms plus study nook. Fantastic location and features chic open plan layout with a large balcony.

- Spacious living interiors with 2.7m high ceiling
- Open plan kitchen, CaesarStone benchtop and Blanco appliances, dishwasher and microwave
- 2 spacious well appointed with built-ins
- Ultra modern apartment, parking and storage
- Chic open plan layout with wall-to-wall sliding glass doors
- Zoned air conditioning, NBN ready and Foxtel options
- Designer sleek bathrooms with wall-hung vanities, bath in main
- Convenience of an internal laundry with a dryer
- Spacious entertainers balcony with tranquil aspect
- Features security parking and lift access, visitor parking
- Very close to Top Ryde shopping Centre, local schools and public transport
- Wonderful walk ways, close proximity to Victoria road transportation

🛏 2 🚿 2 🚗 1

Price

LEVEL 4 | \$820 PW | LEASED
AT FIRST OPEN

Property Type

Rental

Property ID

7149

Agent Details

Tammy (Rungnapa) Kanittanon - 0431
511 907 tammy@greenciff.com.au

Office Details

Greencliff Camperdown Office
Shop 1 1 Sterling Cct Camperdown NSW
2050 Australia
02 8262 8262

The above information provided has been furnished to us by the vendor/s. We have not verified whether or not that information is accurate and do not have any belief in one way or the other in its accuracy. We do not accept any responsibility to any person for its accuracy and do no more than pass it on. All interested parties should make and rely upon their own inquiries in order to determine whether or not this information is in fact accurate.

greenciff
Inner city specialists