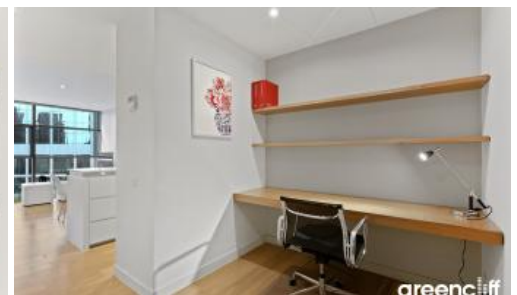




101 Bathurst Street, Sydney



Fabulous East Facing Residences

Unfurnished one bedroom apartment available located on level 22 of the Lumiere building.

Featuring timber flooring with carpet in bedroom, modern kitchen facilities with dishwasher, grand bathroom, floor to ceiling glass windows, internal loggia style entertaining area, well equipped study area, internal laundry with dryer, and unlimited access to Club Lumiere facilities & one security carspace.

- 24-hour concierge reception
- 56 level residential tower
- Dedicated internal laundry space
- Dramatic three-storey glass atrium lobby
- First class spacious & well-equipped gym
- Five high-speed 'intelligent' elevators
- Full height doors & tinted windows
- Fulltime monitored security building

🛏 1 🚿 1 🚗 1

Price

Level 22 | \$950 PW | Deposit Taken

Property Type

Rental

Property ID 7112

Agent Details

Tammy (Rungnapa) Kanittanon - 0431 511 907 tammy@greenciff.com.au

Office Details

Greenciff Sydney Kent St
Level 10/488 Kent Street Sydney NSW
2000 Australia
02 8076 8006

The above information provided has been furnished to us by the vendor/s. We have not verified whether or not that information is accurate and do not have any belief in one way or the other in its accuracy. We do not accept any responsibility to any person for its accuracy and do no more than pass it on. All interested parties should make and rely upon their own inquiries in order to determine whether or not this information is in fact accurate.

greenciff
Inner city specialists