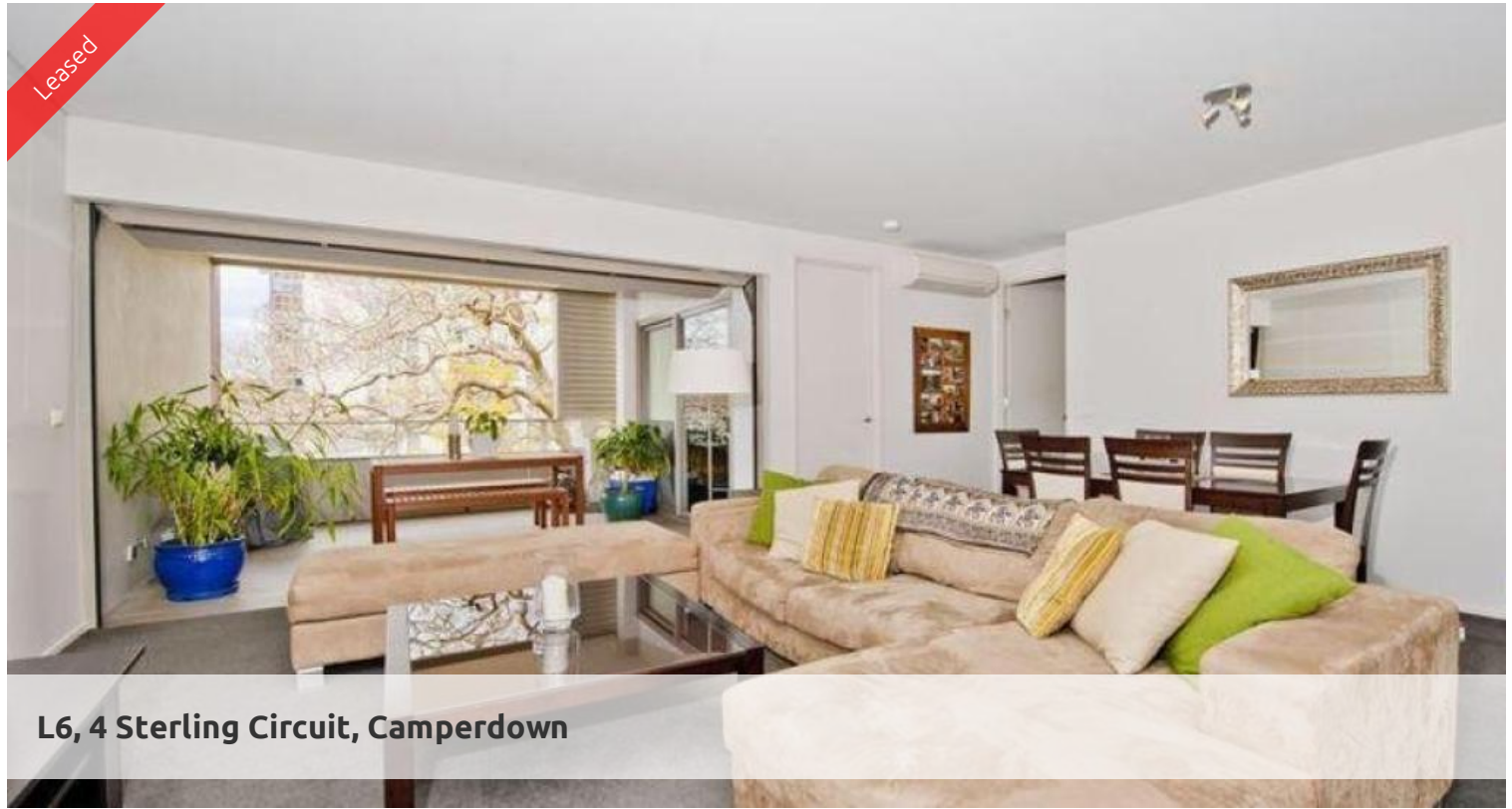


Leased



**L6, 4 Sterling Circuit, Camperdown**



### East Facing 2 Bedroom Apartment !

Superbly positioned within "Vie 2" is this fabulous East facing two bedroom apartment. Perfectly framed by Jacaranda trees creating a tranquil and serene outlook toward the City. Features include:

- Modern open plan kitchen (gas cook top, dishwasher)
- Spacious lounge/dining flowing to loggia with lovely outlook
- Two sleek bathrooms, one with bath, internal laundry facilities
- Two generous bedrooms with built-in wardrobes, light and airy
- Security building with lift and car space, Lovely City views

Being in The City Quarter Complex you will be able to enjoy the free, unlimited access to your choice of a 50 metre outdoor or 25m indoor pool and two gymnasiums. The complex also has 24 hour security, a Japanese restaurant, cafe & convenience store.

Only a 10 minute bus ride to the city or an easy stroll to Glebe, Broadway, Leichhardt and Newtown which are just around the corner.

The above information provided has been furnished to us by the vendor/s. We have not verified whether or not that information is accurate and do not have any belief in one way or the other in its accuracy. We do not accept any responsibility to any person for its accuracy and do no more than pass it on. All interested parties should make and rely upon their own inquiries in order to determine whether or not this information is in fact accurate.

🛏 2 🚿 2 🚗 1

<b>Price</b>	\$730 p/w
<b>Property Type</b>	Rental
<b>Property ID</b>	704

#### Agent Details

William Chen - 0430 026 436  
william@greenciff.com.au

#### Office Details

Greenciff Sydney Kent St  
Level 10/488 Kent Street Sydney NSW  
2000 Australia  
02 8823 8818

**greenciff**  
Inner city specialists