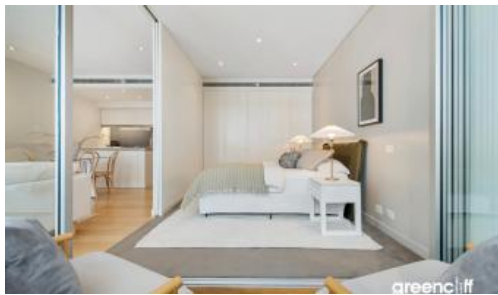




2207, 101 Bathurst St, Sydney



Spacious One Bedroom plus Study Apartment in the Prestigious Lumiere Building

Located high on level 22, this premium east facing residence boasts one of Lumiere's most desirable floor plans. Enhanced with tasteful finishes, this sleek and stylish apartment affords captivating views of Sydney's skyline. Spanning 65 square meters internally with ample space to accommodate a second bed for guests, a nursery, or a study corner. The tranquil bedroom features ample natural light that opens to the Loggia. With its prime location and upscale amenities, this apartment epitomizes luxurious urban living.

Property Highlights:

- Open-plan living and dining area enveloped by floor-to-ceiling glass, offering abundant natural light
- Sleek gas kitchen with island, gas cook-top and quality appliances
- Massive entry area that can be used as a nursery
- Generously sized bedroom with full built-ins
- Cleverly concealed European laundry with added space for storage
- Ample cabinetry and storage spaces
- Secure building with intercom access and 24/7 concierge service

Unlimited access to Club Lumiere facilities featuring a 50-metre heated indoor swimming pool, spa, steam room, sauna, 2 gyms plus yoga/ dance room, private

 1  1  1  86m²

Price For Sale \$1,350,000
Property Type Residential
Property ID 7021
Land Area 86 m²

Agent Details

William Chen - 0430 026 436
 william@greenciff.com.au

Office Details

Greenciff Sydney Kent St
 Level 10/488 Kent Street Sydney NSW
 2000 Australia
 02 8076 8006

greenciff
 Inner city specialists