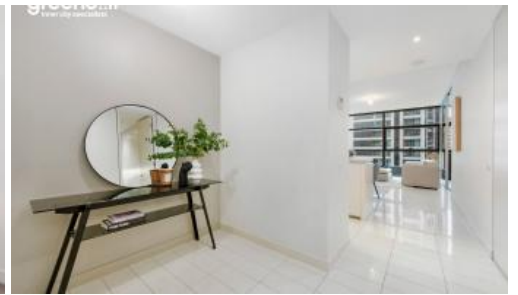


Sold



2306, 101 Bathurst St, Sydney



Spacious One Bedroom plus Study Apartment in the Prestigious Lumiere Building

Located high on level 23, this premium east facing residence boasts one of Lumiere's most desirable floor plans. Enhanced with tasteful finishes, this sleek and stylish apartment affords captivating views of Sydney's skyline. Spanning 65 square meters internally with ample space to accommodate a second bed for guests, a nursery, or a study corner. The tranquil bedroom features ample natural light that opens to the Loggia. With its prime location and upscale amenities, this apartment epitomizes luxurious urban living.

Property Highlights:

- Open-plan living and dining area enveloped by floor-to-ceiling glass, offering abundant natural light
- Sleek gas kitchen with island, gas cook-top and quality appliances
- Massive entry area that can be used as a nursery
- Generously sized bedroom with full built-ins
- Cleverly concealed European laundry with added space for storage
- Ample cabinetry and storage spaces
- Secure building with intercom access and 24/7 concierge service

Unlimited access to Club Lumiere facilities featuring a 50-metre heated indoor swimming pool, spa, steam room, sauna, 2 gyms plus yoga/ dance room, private cinemas and residents lounge. 24 hours concierge services and security.

🛏 1 📶 1 📏 70 m²

Price	SOLD
Property Type	Residential
Property ID	6943
Land Area	70 m ²

Agent Details

William Chen - 0430 026 436
william@greenciff.com.au

Office Details

Greenciff Sydney Kent St
Level 10/488 Kent Street Sydney NSW
2000 Australia
02 8823 8818

greenciff
Inner city specialists