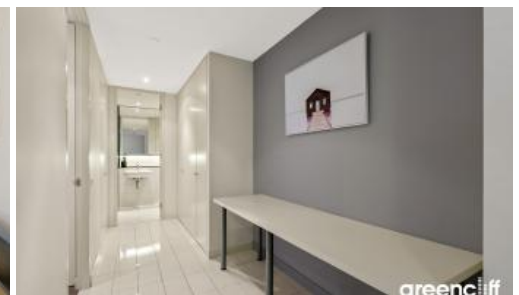


**101 Bathurst St, Sydney**



## Spacious One Bedroom Apartment with Parking in the Prestigious Lumiere Building

Located within the coveted 'Lumiere' complex, this airy and spacious prestige apartment seamlessly blends modern living with unbeatable convenience thanks to its prime location. Crafted by renowned London-based architects Foster + Partners, Apartment 1606, showcases sophisticated interiors, premium fixtures, and exclusive access to Club Lumiere.

### Property Highlights:

- Thoughtfully designed by Foster & Partners, filled with natural light
- Expansive 75sqm layout with a seamless indoor-outdoor flow
- Massive bedroom with a generous built-in wardrobe
- Signature Norman Foster Loggia for year-round versatility
- Sleek designer kitchen with integrated appliances
- Secure parking, separate storage, and 24/7 concierge & security
- Resort-style facilities: 50m pool, spa, steam room, sauna, gym, theatrettes & more
- Prime location - steps to Hyde Park, Darling Harbour & Pitt Street Mall

Disclaimer: All information provided herein has been obtained from sources we consider reliable, but we cannot guarantee its accuracy. This information should not be relied upon; we recommend conducting your own inquiries and seeking advice regarding this property or any property featured on this website.

The above information provided has been furnished to us by the vendor/s. We have not verified whether or not that information is accurate and do not have any belief in one way or the other in its accuracy. We do not accept any responsibility to any person for its accuracy and do no more than pass it on. All interested parties should make and rely upon their own inquiries in order to determine whether or not this information is in fact accurate.

🛏 1 🚿 1 🚗 1 📏 75 m2

**Price**  
**Property Type**  
**Property ID**  
**Land Area**

Contact Agent  
Residential  
6938  
75 m2

### Agent Details

William Chen - 0430 026 436  
william@greenciff.com.au

### Office Details

Greenciff Sydney Kent St  
Level 10/488 Kent Street Sydney NSW  
2000 Australia  
02 8823 8818

**greenciff**  
Inner city specialists