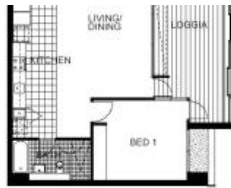


Leased



703, 7 Sterling Circuit, Camperdown



## "ALTRO" NORTH FACING ONE BEDROOM APARTMENT- INSPECTION CANCELLED DEPOSIT RECEIVED

Spacious North facing one bedroom apartment perfectly positioned within "Altro" in the popular City Quarter complex. Features include:

- Sunny and spacious combined living/dining area
- Gourmet kitchen, gas cook top and dishwasher
- Huge timber decked loggia with superb outlook
- Generous bedroom with built-in wardrobe
- Sleek bathroom (with bath), internal laundry
- Security building with lift, quality finishes

Being in The City Quarter Complex you will be able to enjoy the free, unlimited access to your choice of a 50 metre outdoor or 25m indoor pool and two gymnasiums. The complex also has 24 hour security, a Japanese restaurant, cafe & convenience store.

Only a 10 minute bus ride to the city or an easy stroll to Glebe, Broadway, Leichhardt and Newtown which are just around the corner.

The above information provided has been furnished to us by the vendor/s. We have not verified whether or not that information is accurate and do not have any belief in one way or the other in its accuracy. We do not accept any responsibility to any person for its accuracy and do no more than pass it on. All interested parties should make and rely upon their own inquiries in order to determine whether or not this information is in fact accurate.

1 1

<b>Price</b>	\$570 p/w
<b>Property Type</b>	Rental
<b>Property ID</b>	667

### Agent Details

William Chen - 0430 026 436  
william@greenciff.com.au

### Office Details

Greenciff Sydney Kent St  
Level 10/488 Kent Street Sydney NSW  
2000 Australia  
02 8076 8006

**greenciff**  
Inner city specialists