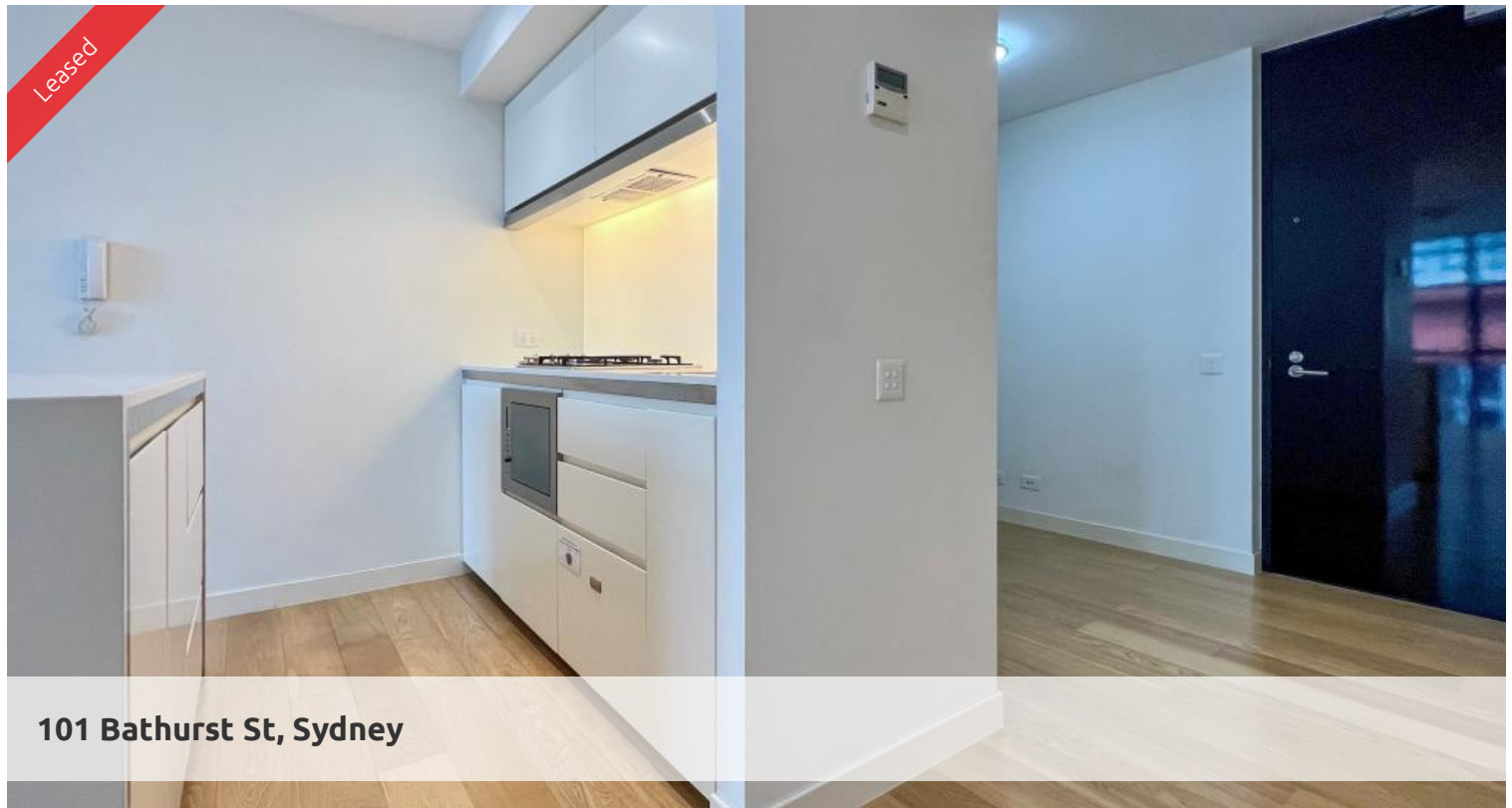


Leased



101 Bathurst St, Sydney



### Spacious East Facing Lumiere Residence

Stunning light filled, east facing one bedroom unfurnished apartment available in the sought after Lumiere Residence.

The apartment features:

- Roughly 65sqm, with study nook and internal loggia
- Timber flooring throughout, carpeted in the bedroom with built-in robe
- Bathroom facilities with internal laundry
- Modern kitchen with bar fridge, drawer dishwasher, gas cooking top, and convection microwave / oven
- Ducted air-conditioning
- 24hrs concierge and security

Full access to Club Lumiere facilities including a spectacular indoor to outdoor 50 metre swimming pool, sauna, spa, steam room, gym separate weights and cardio room, function room and 2 cinemas.

The above information provided has been furnished to us by the vendor/s. We have not verified whether or not that information is accurate and do not have any belief in one way or the other in its accuracy. We do not accept any responsibility to any person for its accuracy and do no more than pass it on. All interested parties should make and rely upon their own inquiries in order to determine whether or not this information is in fact accurate.

🛏 1 🚿 1 🚗 1

#### Price

Level 26 | \$900 PW | Deposit Taken

#### Property Type

Rental

**Property ID**6530

#### Agent Details

Tammy (Rungnapa) Kanittanon - 0431 511 907 tammy@greenciff.com.au

#### Office Details

Greenciff Sydney Kent St  
Level 10/488 Kent Street Sydney NSW  
2000 Australia  
02 8823 8818

**greenciff**  
Inner city specialists