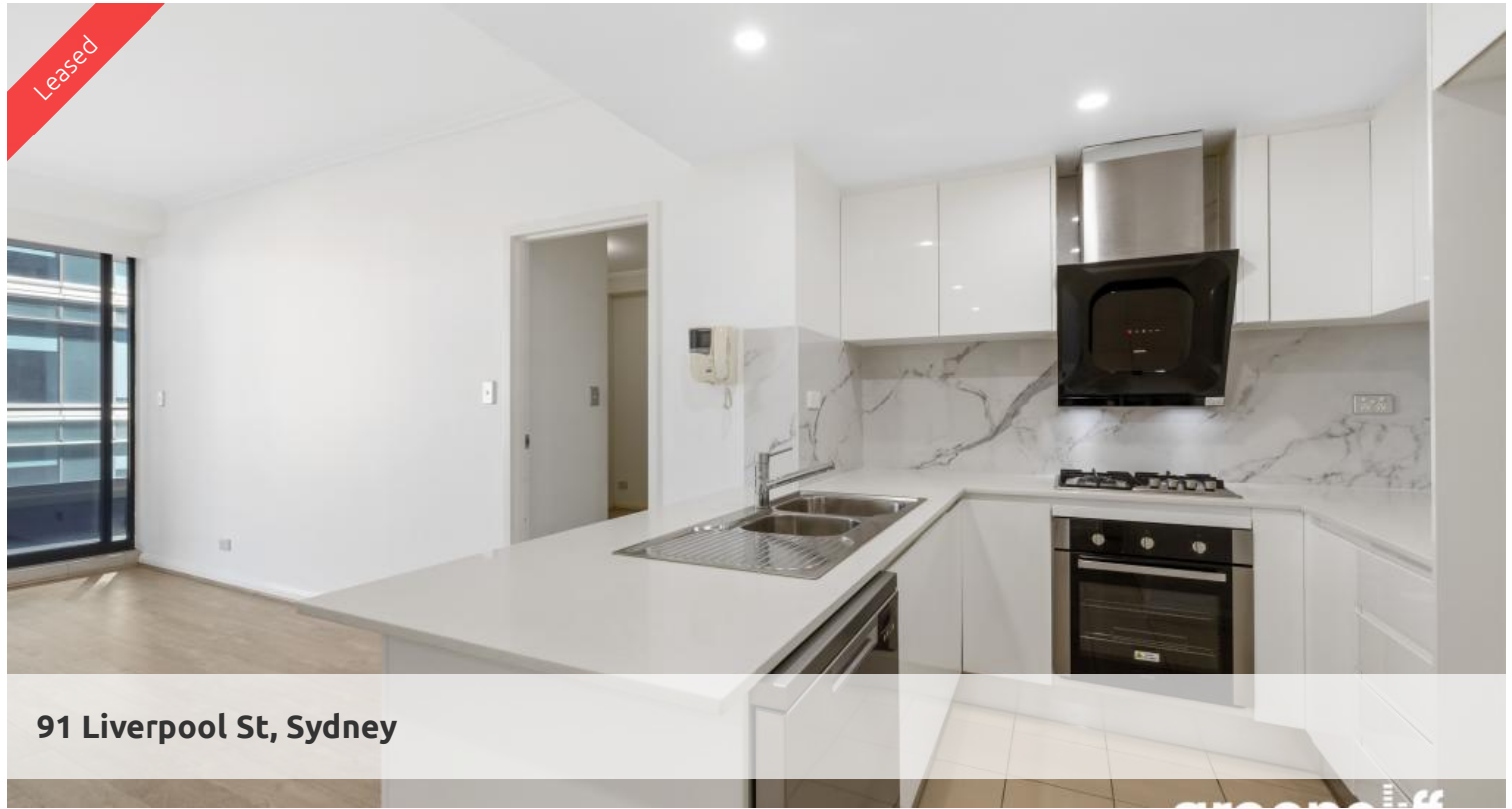
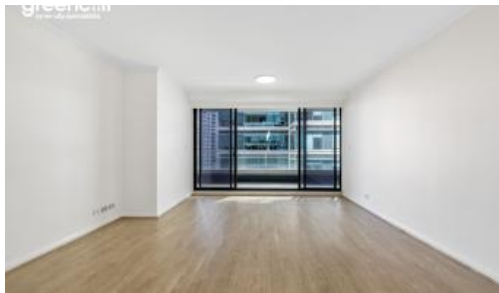


Leased



91 Liverpool St, Sydney



World Tower - perfect city pad

With cafes, eateries, shops and transportations at door - World Tower has the ultimate city convenience for the busy executives.

- The apartment
 - Spacious two unfurnished bedrooms with built in robe
 - Study off master bedroom
 - Allocated parking space
 - Large entertaining balcony overlooking the city skylines, with storage box
 - Timber floorboards
 - European Miele appliances
 - Internal laundry
- - Security intercom system, air conditioning

The building

- A 25 m heated indoor lap pool
- Integrated spa, sauna, and fully equipped gym
- 24 hour security and On-site building manager

🛏 2 🚿 2 🚗 1

Price

Level 28 | \$1200 PW |
Deposit Taken

**Property
Type**
**Property
ID**

Rental
6517

Agent Details

Tammy (Rungnapa) Kanittanon - 0431
511 907 tammy@greenciff.com.au

Office Details

Greenciff Sydney Kent St
Level 10/488 Kent Street Sydney NSW
2000 Australia
02 8076 8006

The above information provided has been furnished to us by the vendor/s. We have not verified whether or not that information is accurate and do not have any belief in one way or the other in its accuracy. We do not accept any responsibility to any person for its accuracy and do no more than pass it on. All interested parties should make and rely upon their own inquiries in order to determine whether or not this information is in fact accurate.

greenciff
Inner city specialists