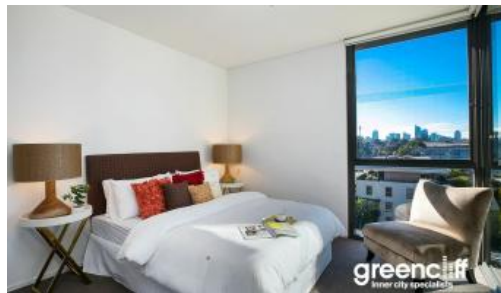


Leased



7 Sterling Cct, Camperdown



STUNNING APARTMENT - AMAZING CITY VIEWS

This beautiful apartment is modern and stylish sitting on the north east corner with beautiful views of Sydney City. The apartment is light and airy with a lovely open plan layout architecturally designed with quality fixtures and fittings through out.

- Designer kitchen with gas cooking and dishwasher.
- Amazing open plan living area with expansive City views.
- Large loggia area that is perfect for entertaining or relaxing and taking in the views.
- Modern bathroom.
- Spacious bedroom with built in robes.
- Security parking.

Being in The City Quarter Complex you will be able to enjoy the free, unlimited access to your choice of a 50 metre outdoor or 25m indoor pool and two gymnasiums. The complex also has 24 hour security and restaurants.

Only a 10 minute bus ride to the city or an easy stroll to Tramsheds, Jubilee park, Glebe, RPA hospital, Sydney University, Broadway, Leichhardt and Newtown which are just around the corner.

🛏 1 🚿 1 🚗 1

Price

LEVEL 7 | DEPOSIT
TAKEN

**Property
Type**

Rental

Property ID

6516

Agent Details

Tammy (Rungnapa) Kanittanon - 0431
511 907 tammy@greenciff.com.au

Office Details

Greenciff Camperdown Office
Shop 1 1 Sterling Cct Camperdown NSW
2050 Australia
02 8262 8262

greenciff
Inner city specialists

The above information provided has been furnished to us by the vendor/s. We have not verified whether or not that information is accurate and do not have any belief in one way or the other in its accuracy. We do not accept any responsibility to any person for its accuracy and do no more than pass it on. All interested parties should make and rely upon their own inquiries in order to determine whether or not this information is in fact accurate.