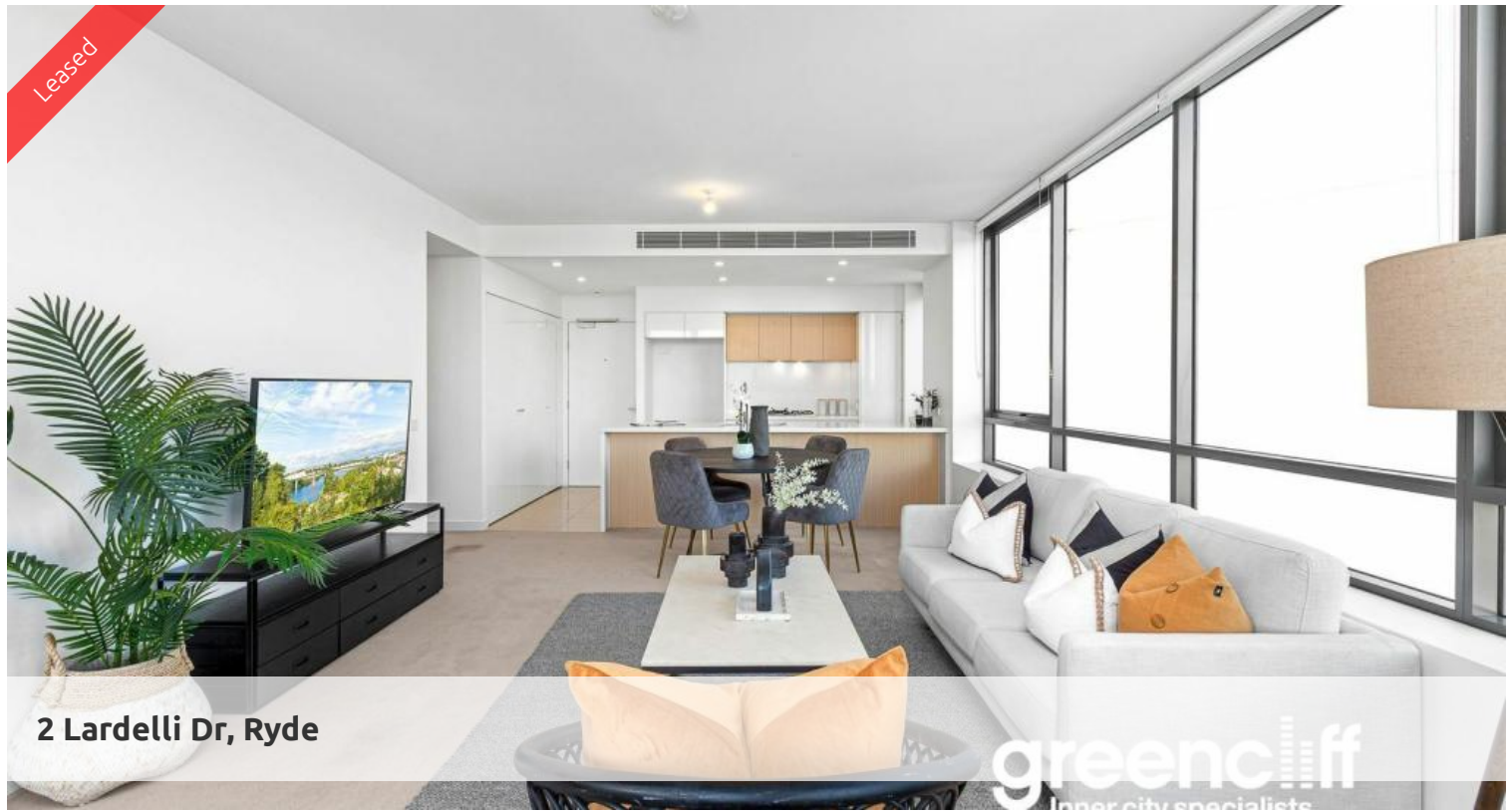


Leased



2 Lardelli Dr, Ryde

greenc^{||||}ff
Inner city specialists



OVERSIZED TWO BEDROOM WITH PARKING

Two bedroom apartment perfectly positioned in "Palmera" South building, part of the superb "Putney Hill" development.

Features Include:

- Light filled spacious interiors offer a sleek modern design
- Combined lounge/dining flows effortlessly to outdoor living
- Gourmet gas kitchen finished with a Caesar Stone breakfast bar
- Luxuriously spaced bedrooms with built-ins
- Master bedroom with ensuite
- Sleek contemporary main bathroom appointed with quality fittings
- Concealed internal laundry with dryer,
- Ducted air con and natural ventilation system
- Secure car space and storage cage with lift access.
- Free shuttle bus service to and from Kissing Point wharf

Move into this fabulous building in a highly sought after development, conveniently positioned moments from nearby shops, Top Ryde City, cafes, schools, parks and transport.

** images used maybe indicatives only**

The above information provided has been furnished to us by the vendor/s. We have not verified whether or not that information is accurate and do not have any belief in one way or the other in its accuracy. We do not accept any responsibility to any person for its accuracy and do no more than pass it on. All interested parties should make and rely upon their own inquiries in order to determine whether or not this information is in fact accurate.

🛏 2 🚿 2 🚗 1

Price

Palmera South | LEASED AT
FIRST OPEN

**Property
Type**

Rental

**Property
ID**

6489

Agent Details

Tammy (Rungnapa) Kanittanon - 0431
511 907 tammy@greenc^{||||}ff.com.au

Office Details

Greenc^{||||}ff Camperdown Office
Shop 1 1 Sterling Cct Camperdown NSW
2050 Australia
02 8262 8262

greenc^{||||}ff
Inner city specialists