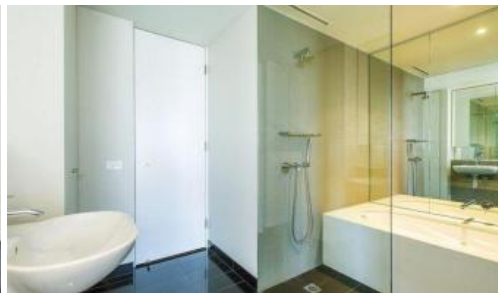


Leased



712, 1 Sterling Circuit, Camperdown



"TRIO" ONE BEDROOM APARTMENT WITH CAR SPACE!

Light and airy one bedroom apartment set in the South building of sought after Trio. With a seventh floor position the apartment boasts extensive district views and a relaxed flow of indoor/outdoor living. Features include:

- Spacious living area with bifold doors to generous timber decked loggia
- Open plan kitchen with gas cook top, fridge and dishwasher
- Spacious bedroom with built-in wardrobe and access to loggia
- Dual access bathroom with separate bath and shower, sleek finishes
- Separate study space, internal laundry, undercover security car space

Being in The City Quarter Complex you will be able to enjoy the free, unlimited access to your choice of a 50 metre outdoor or 25m indoor pool and two gymnasiums. The complex also has 24 hour security, a Japanese restaurant, cafes & convenience store.

Only a 10 minute bus ride to the city or an easy stroll to Annandale shopping village, Glebe, Broadway, Leichhardt and Newtown which are just around the corner.

The above information provided has been furnished to us by the vendor/s. We have not verified whether or not that information is accurate and do not have any belief in one way or the other in its accuracy. We do not accept any responsibility to any person for its accuracy and do no more than pass it on. All interested parties should make and rely upon their own inquiries in order to determine whether or not this information is in fact accurate.

1 1 1

Price
Property Type
Property ID

P.O.A.
Rental
644

Agent Details

William Chen - 0430 026 436
william@greenciff.com.au

Office Details

Greenciff Sydney Kent St
Level 10/488 Kent Street Sydney NSW
2000 Australia
02 8076 8006

greenciff
Inner city specialists