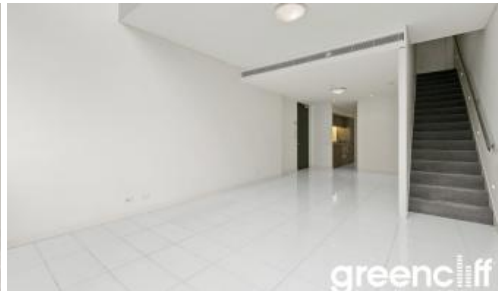


Leased

101 Bathurst St, Sydney

greenc^{||||}ff



SOUTH FACING LOFT STYLE APARTMENT with additional study or guest bedroom

South facing unfurnished Loft Style One bedroom + Study apartment available on level 36 of the Lumiere Residences.

- Floor to ceiling glass windows that look out into the city and distance
- Open plan living and dining area
- Modern kitchen featuring gas cooking, dishwasher, microwave
- 2 chic bathrooms
- Study area
- Double sized bedroom with built in cupboards
- Internal laundry with dryer
- Secure parking for 1 car

Unlimited access to Club Lumiere facilities & Lumiere private cinemas. 24 hours concierge services are just some of the benefits of living at Lumiere Residences.

The above information provided has been furnished to us by the vendor/s. We have not verified whether or not that information is accurate and do not have any belief in one way or the other in its accuracy. We do not accept any responsibility to any person for its accuracy and do no more than pass it on. All interested parties should make and rely upon their own inquiries in order to determine whether or not this information is in fact accurate.

🛏 1 🚿 2 🚗 1

Price

Level 36 | \$950 PW | Deposit Taken

Property Type

Rental

Property ID6408

Agent Details

Tammy (Rungnapa) Kanittanon - 0431 511 907 tammy@greenc^{||||}ff.com.au

Office Details

Greenc^{||||}ff Sydney Kent St
Level 10/488 Kent Street Sydney NSW
2000 Australia
02 8823 8818

greenc^{||||}ff
Inner city specialists