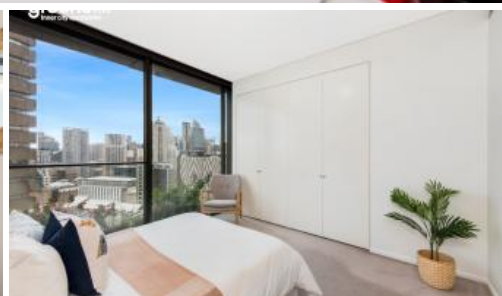


Sold



E1805, 3 Carlton St, Chippendale



## Priceless Opportunity on Landmark Central Park Tower

This opportunity is hard to come by. Stunning northeast city view apartment located on level 18 in renowned Central Park East building. Internationally celebrated Architect designed building with precision quality has no similar comparable. The wait is over for those who has been waiting for this opportunity to arise!

- Located in the heart of beautiful Sydney City
- Timeless beauty inside & out
- Breathtaking elevated view
- High standard fixtures & finish
- Top end kitchen & Bathroom facility
- Timber floors
- Luxurious bathroom with mirror & wood splashback
- Ducted air conditioning
- One secure car space & separate storage cage
- On-site concierge, secure video intercom & lift access
- 20m outdoor heated pool & spa, fully equipped commercial-grade gymnasium

2 1 1 89 m2

<b>Price</b>	SOLD
<b>Property Type</b>	Residential
<b>Property ID</b>	6381
<b>Land Area</b>	89 m2

### Agent Details

William Chen - 0430 026 436  
william@greenciff.com.au

### Office Details

Greenciff Central Park Office  
101/5 Carlton Street Chippendale NSW  
2008 Australia  
02 9199 6555

**greenciff**  
Inner city specialists

The above information provided has been furnished to us by the vendor/s. We have not verified whether or not that information is accurate and do not have any belief in one way or the other in its accuracy. We do not accept any responsibility to any person for its accuracy and do no more than pass it on. All interested parties should make and rely upon their own inquiries in order to determine whether or not this information is in fact accurate.