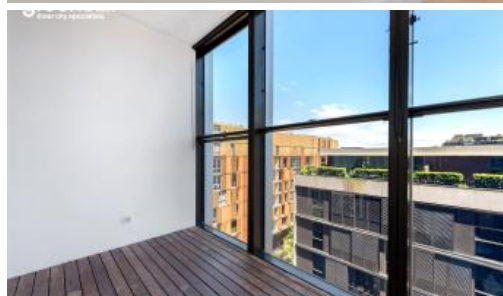


Sold

## 918, 18 Park Lane, Chippendale



### Stamp Duty Exemption for First Home Buyers!

Located in the heart of Central Park, this one bedroom suite is perfect for first home buyers looking to occupy an expansive city pad, or for astute investors looking to capitalise on the strong Central Park rental market.

Conveniently located, this apartment is a short stroll to a collection of shopping, entertainment, dining, bars and galleries.

Rich in amenities, The MARK building features:

- High floor to ceiling windows
- Enclosed balcony
- Built-in wardrobes
- Luxury modern kitchen with stainless steel appliances
- Secure building with 24-hour concierge
- Fitness centre with pool, gymnasium & spa
- Pets allowed
- Note: separate car space is available to buy or to rent.

Outgoings per quarter: (approx)

Strata fees \$1,700

1 bed 1 bath 47 m<sup>2</sup>

<b>Price</b>	SOLD
<b>Property Type</b>	Residential
<b>Property ID</b>	6249
<b>Land Area</b>	47 m <sup>2</sup>

### Agent Details

William Chen - 0430 026 436  
william@greenciff.com.au

### Office Details

Greenciff Central Park Office  
101/5 Carlton Street Chippendale NSW  
2008 Australia  
02 9199 6555

**greenciff**  
Inner city specialists