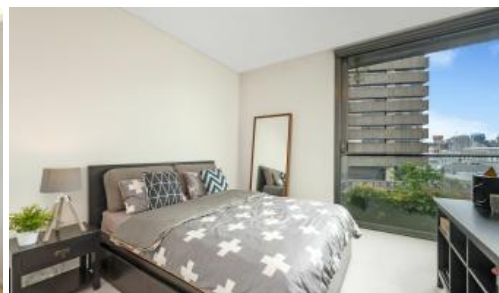


Sold

**E1504, 3 Carlton St, Chippendale**



### North Facing One Bed in the Famous One Central Park

Situated on Level 15 of 'One Central Park East', this stunning one bedroom apartment offers inner-city living surrounded by a living vertical garden. One Central Park presents the perfect combination of luxury meeting nature.

Rich in amenities, this Central Park apartment features:

- Award winning modern design
- Elegant finishes, with dark timber and carpet flooring
- North facing views, captured through floor-to-ceiling windows
- Storage cage
- Security building with 24 hour concierge
- Fitness centre with heated pool, commercial sized gym & spa
- 6 star green rated development
- 5 level shopping centre with Woolworths for your everyday shopping needs

This apartment offers an abundance of amenities right at your doorstep. Step right out onto Broadway, Central Park Mall, Central Station, Spice Alley, UTS, Sydney University, Haymarket and City Centre.

Outgoings Per Quarter (approx)

Strata: \$1768

Council Rates: \$300

🛏 1 🚿 1 📏 49 m2

**Price**

SOLD

**Property Type**

Residential

**Property ID**

6138

**Land Area**

49 m2

#### Agent Details

William Chen - 0430 026 436

[william@greenciff.com.au](mailto:william@greenciff.com.au)

#### Office Details

Greenciff Central Park Office  
101/5 Carlton Street Chippendale NSW  
2008 Australia  
02 9199 6555

**greenciff**  
Inner city specialists