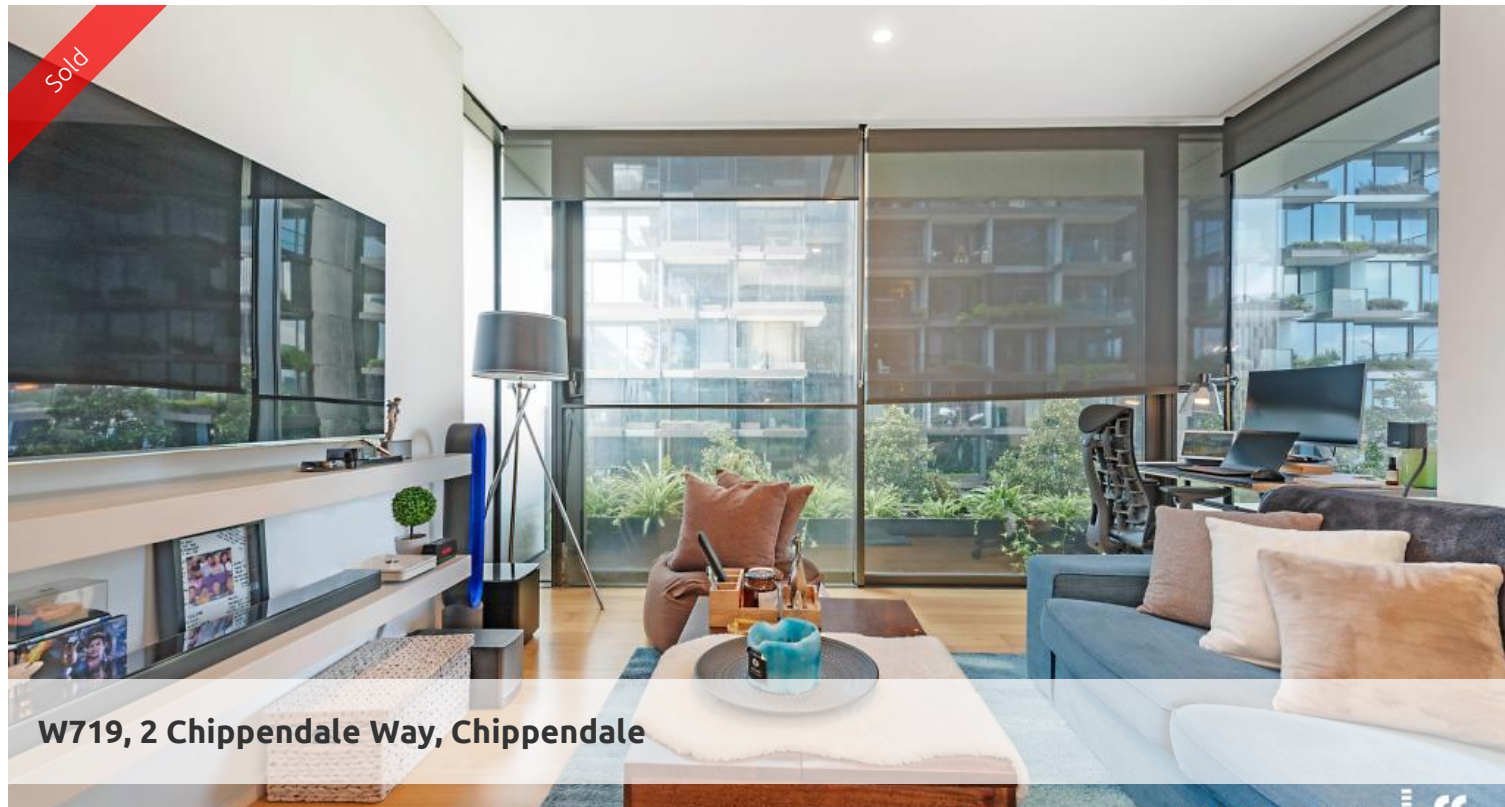


Sold



W719, 2 Chippendale Way, Chippendale



East Facing with Pool View

Enjoy the convenience of shopping, entertainment, dining and transport right at your doorstep. Built around a beautiful park, Central Park is the perfect combination of luxury meeting nature. The open living and dining plan is perfect for today's urban lifestyle, unit also offers modern fixtures and inclusions such as fridge, smeg gas cooking, microwave washing machines.

Property features:

- Window in the bedroom area
- 5 Green Star development
- Ducted Air Conditioning
- Loggia/Enclosed balcony
- Spa
- BBQ
- Pool
- High standard Gym
- 24 concierge service and security
- First Home Buyer Benefit

Note: car space is available for lease \$45 per week.

Inspection is a must please call Danny Yeung of Greycliff Realty on 0451 836 388

1 bed 1 bath

Price
Property Type
Property ID

SOLD
Residential
5912

Agent Details

William Chen - 0430 026 436
william@greycliff.com.au

Office Details

Greycliff Central Park Office
101/5 Carlton Street Chippendale NSW
2008 Australia
02 9199 6555

greycliff
Inner city specialists