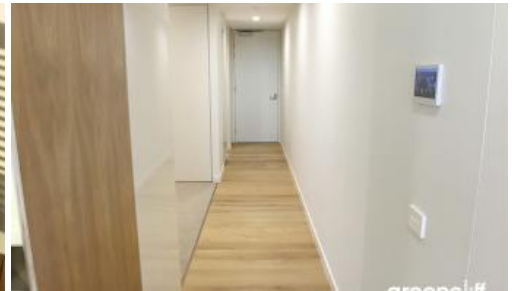
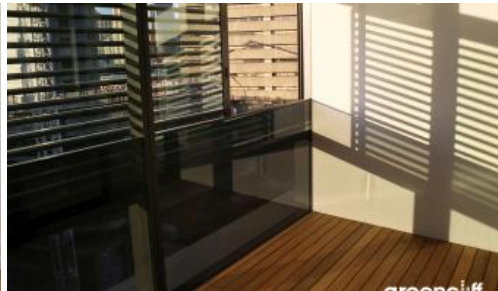


Leased

## 1 Chippendale Way, Chippendale



### HIGH LEVEL MODERN ONE BEDROOM SUITE IN DUO

**Please meet at our office 5 Carlton Street, Chippendale a few minutes before to register and inspect.**

Nestled in the heart of Chippendale, Duo is amongst fashionable retail outlets, a Woolworths supermarket and various cafes and eateries including the impressive new eating precinct Spice Alley on Kensington Lane.

Moments to Central station, buses and surrounding Universities makes living at Central Park the ultimate in downtown living.

The apartments boast intelligent and lifestyle-savvy interiors, features

- Ducted air conditioning
- Smart lighting system
- Loggia for indoor/outdoor living
- Fridge and washer/dryer included
- European kitchen appliances/stone bench tops
- The latest bathroom fittings and design
- Timber flooring
- Security intercom system
- Gas included with rent

Duo offers

Resort style Indoor/Outdoor swimming pool, gymnasium and jacuzzi on level 2  
Communal Rooftop Terrace on level 16 – Complete with BBQ facilities and seating areas overlooking the ever gorgeous cityscape views of Central Park.

Concierge Service – 24 hours

For further information, please contact Nathan Takounlao on 0451 509 605.

1 1

**Price**

Level 16 | DEPOSIT  
TAKEN

**Property  
Type**

Rental

**Property ID** 5878

#### Agent Details

William Chen - 0430 026 436  
william@greenciff.com.au

#### Office Details

Greenciff Central Park Office  
101/5 Carlton Street Chippendale NSW  
2008 Australia  
02 9199 6555

**greenciff**  
Inner city specialists