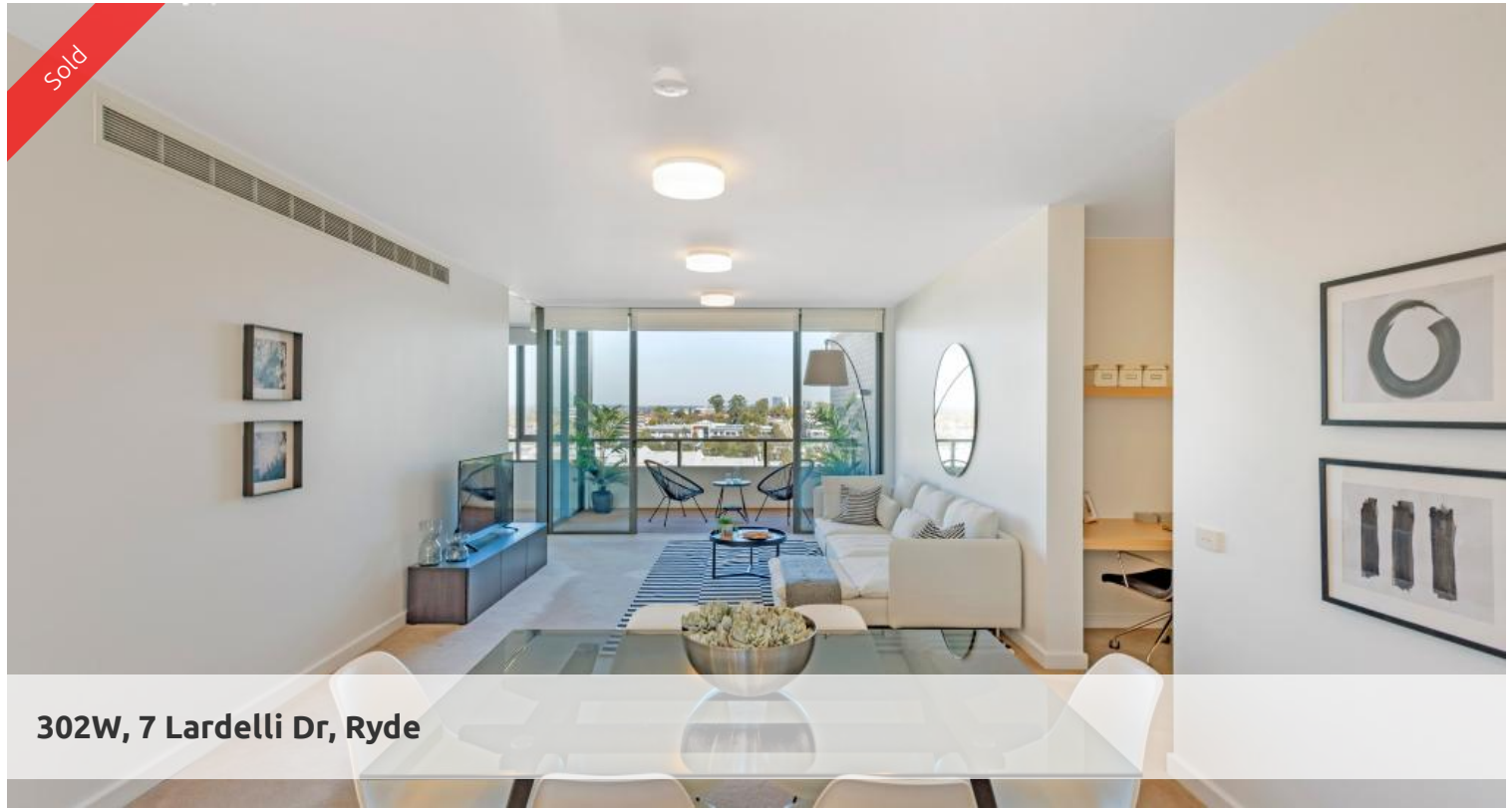


Sold



302W, 7 Lardelli Dr, Ryde



Stunning North Facing Modern Luxury Living!

A rare not to be missed opportunity to own an over sized freshly painted 2 bedroom apartment that will make a beautiful home or an astute investment. Situated in the Picturesque Putney Hill development in the Fig Tree apartments. This large spacious 2 bedroom property offers the chance to live in style and luxury . Spanning from North to South with nearly 120 square meters of space this property offers everything you need and more.

Entrance hall with storage and huge Study nook space.
Modern eat in kitchen with Blanco appliances stone bench tops 6 burner gas top cooking flowing onto an entertainers balcony.
A huge living dining room flowing seamlessly on to an oversized balcony.
Modern sleek designer bathrooms
Good size bedrooms both with ample built in wardrobes ,master with ensuite and bath.

- Two spacious bedrooms, both built-in wardrobes
- Master bedroom with ensuite
- Modern, sleek and stylish bathrooms
- Stone kitchen bench tops with Blanco appliances
- Large bedrooms master with ensuite
- Spacious living area, with access to entertainers balcony
- Freshly painted
- Ducted A/C,
- Video intercom
- Internal laundry
- Secure tandem Carspace and storage cage included
- On site Building Manager

2 2 2

| | |
|----------------------|----------------------|
| Price | SOLD for \$1,100,000 |
| Property Type | Residential |
| Property ID | 5635 |
| Floor Area | 118 m2 |

Agent Details

Emlyn Walters - 0405 606 025
emlyn@greenciff.com.au
William Chen - 0430 026 436
william@greenciff.com.au

Office Details

Greenciff Camperdown Office
Shop 1 1 Sterling Cct Camperdown NSW
2050 Australia
02 8262 8262

greenciff
Inner city specialists