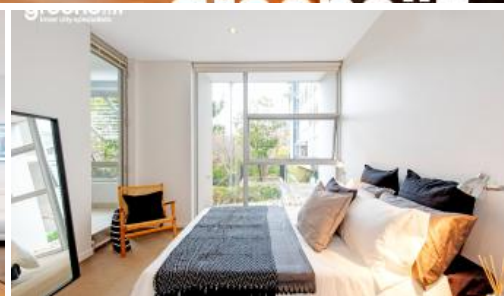


Sold



16, 4 Alexandra Dr, Camperdown



## Spacious light filled ground floor apartment in the Aquilon Building

Light filled freshly painted East facing one bedroom property in the vibrant super convenient locale of City quarter.

This sleek and stylish freshly painted apartment offers resort style living with access to first class premium facilities and is just a short stroll from all the dining and entertainment and dining options of Annandale ,Glebe and Newtown.

- Contemporary and spacious open plan lounge and dining opens seamlessly onto a large sun drenched loggia.
- Large bedroom with built in Robes.
- Gourmet kitchen fitted with quality Smeg appliances.
- Fantastic opportunity for an astute investor ,first home buyer or anyone looking for a beautiful inner West apartment.
- Ground floor access with out use of lifts
- Award winning facilities including an indoor 25m pool and a 50m outdoor pool
- Access to 2 gyms on site
- Security Building with 24 hour on site security as well as Building Manager on site.
- Close proximity to Sydney university and Royal Prince Alfred Hospital

Please contact agent to organise for a private inspection

1 1

<b>Price</b>	SOLD for \$780,000
<b>Property Type</b>	Residential
<b>Property ID</b>	5502
<b>Floor Area</b>	71 m2

### Agent Details

Emlyn Walters - 0405 606 025  
emlyn@greenciff.com.au  
William Chen - 0430 026 436  
william@greenciff.com.au

### Office Details

Greenciff Camperdown Office  
Shop 1 1 Sterling Cct Camperdown NSW  
2050 Australia  
02 8262 8262

The above information provided has been furnished to us by the vendor/s. We have not verified whether or not that information is accurate and do not have any belief in one way or the other in its accuracy. We do not accept any responsibility to any person for its accuracy and do no more than pass it on. All interested parties should make and rely upon their own inquiries in order to determine whether or not this information is in fact accurate.

**greenciff**  
Inner city specialists