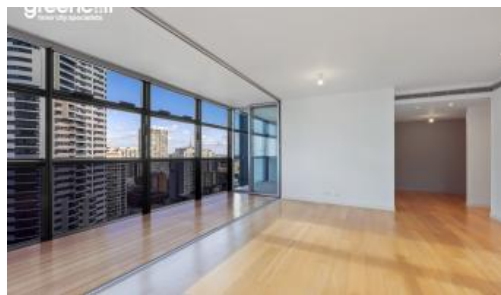


101 Bathurst St, Sydney



Larger South West Corner Two Bedroom Apartment

Stunning freshly painted 2 bedroom apartment located on the South West corner of the Lumiere Residences

Property boasts -

- Timber floorboards in lounge and dining area, carpet in bedrooms
- Modern kitchen facilities with dishwasher, oven, gas cooktop and microwave
- Both bedrooms with built in wardrobes
- Study nook
- Floor to ceiling glass windows throughout
- Expansive internal loggia
- Undercover secure car space

Option for additional parking space at \$70 per week on a separate lease.

The building features 24 hour concierge and security and tenants enjoy unlimited access to Club Lumiere, the most outstanding residential facilities in the CBD!

Club Lumiere includes a spectacular indoor/outdoor 50 metre heated Olympic size pool, sauna, steam room and spa, yoga/dance room. The second level boasts a huge first class gym with separate cardio and weights room, two private cinemas and a function room.

The above information provided has been furnished to us by the vendor/s. We have not verified whether or not that information is accurate and do not have any belief in one way or the other in its accuracy. We do not accept any responsibility to any person for its accuracy and do no more than pass it on. All interested parties should make and rely upon their own inquiries in order to determine whether or not this information is in fact accurate.

 2  2  1

Price

L29 | \$1250 PW - DEPOSIT
TAKEN

**Property
Type**

Rental

Property ID 5432

Agent Details

Lieu Mai - 0415 797 525
lieu@greenciff.com.au

Office Details

Greenciff Sydney Kent St
Level 10/488 Kent Street Sydney NSW
2000 Australia
02 8823 8818

greenciff
Inner city specialists