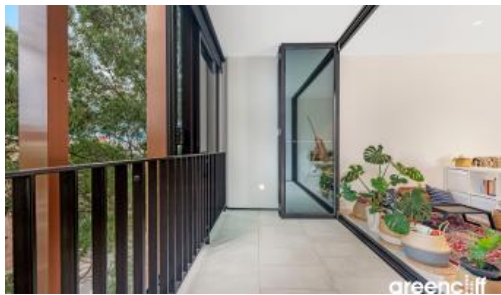


Sold



413, 8 Central Park Ave, Chippendale



## One bedroom in award winning building "Connor"

Connor comprises 178 apartments in a single tower of 12 storeys, designed by Smart Design Studio the talented firm responsible for the interiors of One Central Park's West tower. Connor defines the Chippendale edge of Central Park, located on the corner of O'Connor Street and Central Park Avenue between beautiful Chippendale Green and Abercrombie Street.

Features include:

- 56sqm Property + 2sqm Storage room
- Fridge
- Washing machine/dryer
- Ducted Air conditioning
- Built-in wardrobes
- gas stove, microwave oven, dishwasher
- Security alarm
- Roller blinds
- Concierge
- Pet friendly
- Close to transport
- Rooftop garden, BBQ, SPA and GYM

Please call Danny Yeung of Greencliff Realty to arrange an inspection to view this fantastic, one of a kind property on 0451 836 388

The above information provided has been furnished to us by the vendor/s. We have not verified whether or not that information is accurate and do not have any belief in one way or the other in its accuracy. We do not accept any responsibility to any person for its accuracy and do no more than pass it on. All interested parties should make and rely upon their own inquiries in order to determine whether or not this information is in fact accurate.

1 1

<b>Price</b>	SOLD
<b>Property Type</b>	Residential
<b>Property ID</b>	5408

### Agent Details

Danny Yeung - 0451 836 388  
danny@greenciff.com.au  
William Chen - 0430 026 436  
william@greenciff.com.au

### Office Details

Greencliff Central Park Office  
101/5 Carlton Street Chippendale NSW  
2008 Australia  
02 9199 6555

**greenciff**  
Inner city specialists