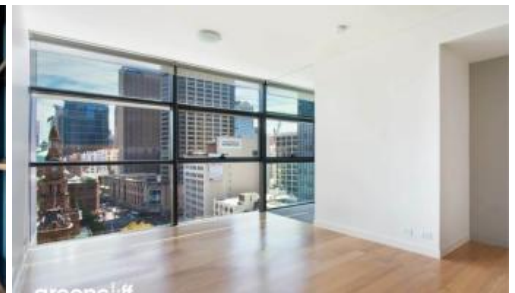


Leased

## 101 Bathurst Street, Sydney



### North Facing Delight

Located in the heart of Sydney's iconic Town Hall precinct, Lumiere at Regent Place is a residential village in the sky.

The apartment features:

- Roughly 57sqm, timber flooring throughout
- Bedroom with built-in robe
- Modern kitchen & bathroom facilities
- Internal laundry with dryer
- Ducted air conditioning
- Secure parking space and storage cage
- Unobstructed view overlooking to Town Hall
- Full access to Club Lumiere and building facilities which include a spectacular indoor/outdoor 50 and 20 meter swimming pool, sauna, spa, gym, function room and 2 cinemas.

During Covid, availabilities of these facilities are managed by building management and as such please adhere to their instructions.

The above information provided has been furnished to us by the vendor/s. We have not verified whether or not that information is accurate and do not have any belief in one way or the other in its accuracy. We do not accept any responsibility to any person for its accuracy and do no more than pass it on. All interested parties should make and rely upon their own inquiries in order to determine whether or not this information is in fact accurate.

🛏 1 🚿 1 🚗 1

<b>Price</b>	Level 22   \$750 PW
<b>Property Type</b>	Rental
<b>Property ID</b>	5405

### Agent Details

Lieu Mai - 0415 797 525  
lieu@greenciff.com.au

### Office Details

Greenciff Sydney Kent St  
Level 10/488 Kent Street Sydney NSW  
2000 Australia  
02 8823 8818

**greenciff**  
Inner city specialists