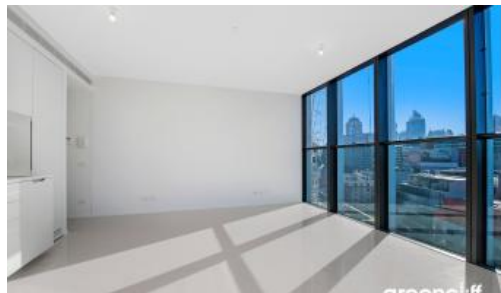




18 Park Lane, Chippendale



MODERN AND STYLISH 2 BED 1 BATH

Please meet at our office on 5 Carlton Street, Chippendale a few minutes before to register and inspect.

This beautifully presented two bedroom apartment has lovely district and some City Views. Floor to ceiling windows with great natural light and a lovely loggia area.

- * Designer kitchen with stainless steel appliances, gas cooking and integrated dishwasher and fridge.
- * Open plan living area with floor to ceiling windows and lovely views.
- * Modern bathroom with rain shower.
- * Two good size bedrooms both with built in robes.
- * Sun drenched loggia perfect for relaxing or entertaining.
- * Security parking.

Central Park has a huge choice of restaurants, bar's and cafe's to choose from as well as a fastastic shopping center. Located next to Central station and only moments to the center of Sydney.

For more information or to arrange a private inspection please contact Nathan Takounlao on 0451 509 605 or 9199 6555.

2 1 1

Price

Level 12 | DEPOSIT TAKEN -
INSPECTION CANCELLED

**Property
Type**

Rental

**Property
ID**

5303

Agent Details

William Chen - 0430 026 436
william@greenciff.com.au

Office Details

Greenciff Central Park Office
101/5 Carlton Street Chippendale NSW
2008 Australia
02 9199 6555

greenciff
Inner city specialists

The above information provided has been furnished to us by the vendor/s. We have not verified whether or not that information is accurate and do not have any belief in one way or the other in its accuracy. We do not accept any responsibility to any person for its accuracy and do no more than pass it on. All interested parties should make and rely upon their own inquiries in order to determine whether or not this information is in fact accurate.