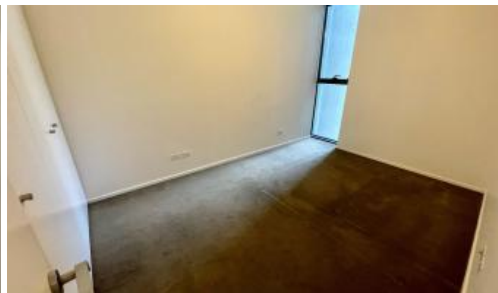
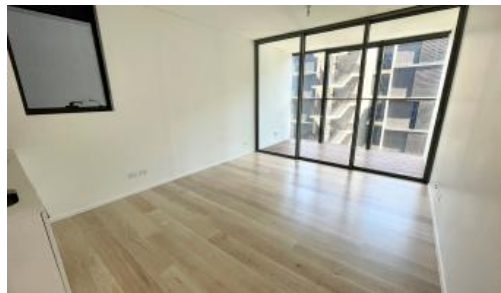




## 18 Park Lane, Chippendale



### ONE BEDROOM WITH PLENTY OF STORAGE IN CENTRAL PARK

**Please meet at our office on 5 Carlton Street, Chippendale a few minutes before to register and inspect**

"The Mark is the future of vibrant inner city living and a shining example of all that advanced technologies and bold imaginations can contribute to modern and sustainable living"

The apartments boast intelligent and lifestyle-savvy interiors, features

- Ducted air conditioning
- Loggia for indoor/outdoor living (timber decking)
- Fridge and washer/dryer included
- European kitchen appliances/stone bench tops
- The latest bathroom fittings and design
- Timber flooring throughout (carpeted bedroom)
- Self contained laundry (not shared)

The Mark offers

The Deck - Situated on the rooftop with a spa, terrace spaces to relax

The Lounge Room – Situated on the ground floor with wireless reading room

The Lobby - A 24/7 concierge and security services

For further information or to inspect, please call Raymond Wijaya on 0433 668 648 or Nathan Takounlao on 0451 509 605

**\*\* images used maybe indicatives only\*\***

1 1

**Price** Level 6 | DEPOSIT TAKEN

**Property Type** Rental

**Property ID** 5218

#### Agent Details

William Chen - 0430 026 436

[william@greenciff.com.au](mailto:william@greenciff.com.au)

#### Office Details

Greenciff Central Park Office

101/5 Carlton Street Chippendale NSW

2008 Australia

02 9199 6555

**greenciff**  
Inner city specialists

The above information provided has been furnished to us by the vendor/s. We have not verified whether or not that information is accurate and do not have any belief in one way or the other in its accuracy. We do not accept any responsibility to any person for its accuracy and do no more than pass it on. All interested parties should make and rely upon their own inquiries in order to determine whether or not this information is in fact accurate.