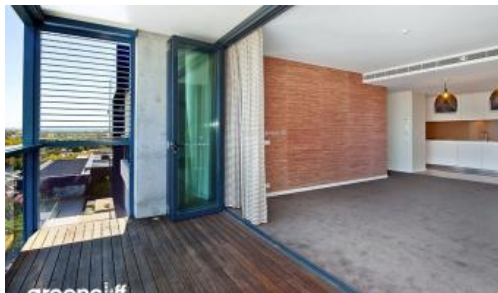




**3 Sterling Cct, Camperdown**



## 2 BEDROOM PLUS STUDY SPACE

Due to COVID19 masks must be worn at all times whilst attending our open homes.

Trio is just a 10 minutes bus ride to Sydney CBD, with major universities, RPA Hospital, Broadway Shopping Centre, Annandale shopping village, Glebe, Tramsheds, Jubilee Park and transport all within walking distance.

Apartment features: -

- Spacious living area boasting tranquil leafy outlook
- Ultra modern open plan kitchen with gas cook top and dishwasher
- Private loggia with timber decking, ideal for alfresco entertaining
- Large two bedroom with built-in wardrobe, light and airy throughout
- Dedicated study space, ideal for home office, internal laundry
- Dual access bathroom with separate bath and shower
- Undercover security car space
- Ducted air conditioning

Enjoy unlimited access to your choice of a 50m outdoor or 25m indoor pool and two gymnasiums. The complex also has 24 hour security, a Japanese restaurant and cafes.

For more information please call Roxanne on 0481 860 123 or email

[roxanne@greencliff.com.au](mailto:roxanne@greencliff.com.au)

\*\* images used maybe indicatives only\*\*

 2  2  1

### Price

Level 14 | \$900 | DEPOSIT  
TAKEN

### Property Type

Rental

**Property ID 5193**

### Agent Details

Michelle Kilala - 0419 777 239

[michelle@greencliff.com.au](mailto:michelle@greencliff.com.au)

Tammy (Runnapa) Kanittanon - 0431

511 907 [tammy@greencliff.com.au](mailto:tammy@greencliff.com.au)

### Office Details

Greencliff Camperdown Office  
Shop 1 1 Sterling Cct Camperdown NSW  
2050 Australia  
02 8262 8262

**greenc**  **ff**  
Inner city specialists

The above information provided has been furnished to us by the vendor/s. We have not verified whether or not that information is accurate and do not have any belief in one way or the other in its accuracy. We do not accept any responsibility to any person for its accuracy and do no more than pass it on. All interested parties should make and rely upon their own inquiries in order to determine whether or not this information is in fact accurate.