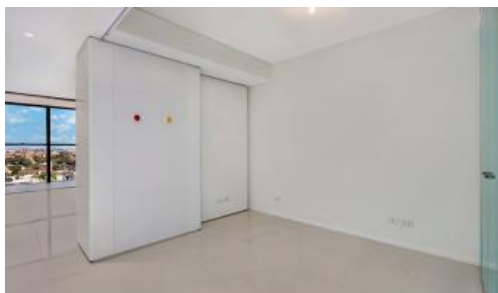


Sold

1902, 18 Park Lane, Chippendale



One Bed Suite with park view For Sale

Conveniently located in Central Park, the property is a short stroll to a collection of shopping, entertainment, dining, bars and galleries.

Rich in amenities, The MARK building features:

High floor to glass ceiling

Enclosed balcony

Built-in wardrobes

Luxury modern kitchen with stainless steel appliances

Secure building with 24-hour concierge

Fitness centre with pool, gymnasium & spa

Pets allowed

Note: separate car space is available to buy or to rent.

Outgoings per quarter (approx.):

Strata fees \$1,750

Council rates \$250

Water rates \$250

For more information or to arrange a viewing, please contact William Chen of Greencliff Realty on 0430 026 436

 1  1

Price

SOLD

Property Type

Residential

Property ID

5174

Agent Details

William Chen - 0430 026 436

william@greencliff.com.au

Office Details

Greencliff Central Park Office

101/5 Carlton Street Chippendale NSW

2008 Australia

02 9199 6555

greenc**ff**
Inner city specialists

The above information provided has been furnished to us by the vendor/s. We have not verified whether or not that information is accurate and do not have any belief in one way or the other in its accuracy. We do not accept any responsibility to any person for its accuracy and do no more than pass it on. All interested parties should make and rely upon their own inquiries in order to determine whether or not this information is in fact accurate.