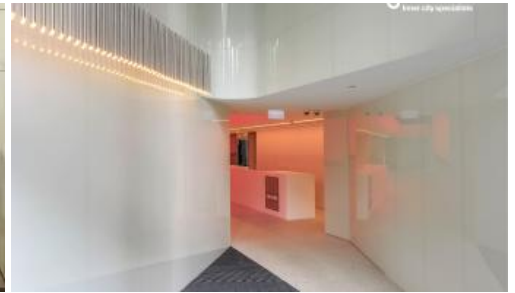


Leased

8 Central Park Ave, Chippendale



NORTH FACING 1 BED IN CONNOR

Please meet at our office 101/5 Carlton St Chippendale, a few minutes before to register and inspect.

"Connor is a balance of location and surroundings, opportunity and innovation. Both modern and warm, contemporary and inviting, It is supremely comfortable nestled on the edge of old and new."

Designed by Smart Design Studio, Connor offers a selection of 178 impeccably designed apartments.

Nestled in the heart of Chippendale, Connor is amongst fashionable retail outlets, a Woolworths supermarket and various cafes and eateries including the impressive new eating precinct Spice Alley on Kensington Lane.

Moments to Central station, buses and surrounding Universities makes living at Central Park the ultimate in downtown living.

The apartments boast intelligent and lifestyle-savvy interiors, features

- Ducted air conditioning
- Smart lighting system
- Small balcony for indoor/outdoor living
- Fridge and washer/dryer included
- European kitchen appliances/stone bench tops
- The latest bathroom fittings and design
- Security intercom system

Connor offers

Cardio Room –A fully equipped daylight cardio gym

Communal Rooftop Terrace – complete with a jacuzzi, BBQ with seating areas overlooking the ever-passionate cityscapes of Central Park.

1 1

Price Level 7 | DEPOSIT TAKEN

Property Type Rental

Property ID 5074

Agent Details

William Chen - 0430 026 436

william@greenciff.com.au

Office Details

Greenciff Central Park Office

101/5 Carlton Street Chippendale NSW

2008 Australia

02 9199 6555

greenciff
Inner city specialists