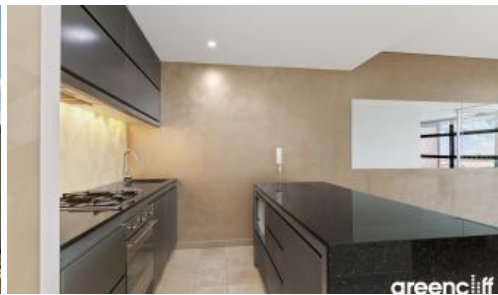


Leased



101 Bathurst Street, Sydney



## Amazing Harbour Views from Lumiere Residences

Stunning two bedroom, two bathroom apartment located on level 43 of the glamorous Lumiere building.

Featuring elegant stone tiles throughout living areas, combined lounge & dining area leading to European style winter garden... Beautiful views of Town Hall and Cathedral and the city beyond.

This 2 bedroom apartment also boasts modern kitchen facilities with dishwasher, grand bathroom, floor to ceiling glass windows, internal laundry with dryer, one security undercover carspace and unlimited access to Club Lumiere.

- 24-hour concierge reception
- 56 level residential tower
- Colour audiovisual intercom
- Dramatic three-storey glass atrium lobby
- First class spacious & well equipped gym
- Five high-speed 'intelligent' elevators
- Fulltime monitored security surveillance cameras
- Fully ducted climate-controlled air-conditioning

🛏 2 🚿 2 🚗 1

### Price

Level 43 | \$1100 PW -  
Deposit Taken

### Property Type

Rental

### Property ID

5068

### Agent Details

Lieu Mai - 0415 797 525  
lieu@greenciff.com.au

### Office Details

Greenciff Sydney Kent St  
Level 10/488 Kent Street Sydney NSW  
2000 Australia  
02 8823 8818

**greenciff**  
Inner city specialists

The above information provided has been furnished to us by the vendor/s. We have not verified whether or not that information is accurate and do not have any belief in one way or the other in its accuracy. We do not accept any responsibility to any person for its accuracy and do no more than pass it on. All interested parties should make and rely upon their own inquiries in order to determine whether or not this information is in fact accurate.