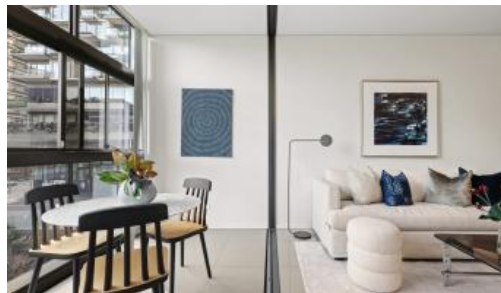


**1 Park Lane, Chippendale**



## Smart investment property in Central Park

Central Park is inner city living at its best!

Enjoy the convenience of shopping, entertainment, dining and transport right at your doorstep. Built around a beautiful park, One Central Park is the perfect combination of luxury meeting nature.

Rich in amenities, this apartment features:

- Stainless steel appliances
- Security building with 24 hour concierge
- Fitness centre with pool, gymnasium
- Bonus of a rooftop BBQ area & spa
- 6 star green rated development
- 5 level shopping centre with Woolworths
- View over Chippendale Green park

For more information or arrange a viewing, please contact William Chen on 0430 026 436

1 1

**Price** SOLD for \$580,000  
**Property Type** Residential  
**Property ID** 5030

### Agent Details

William Chen - 0430 026 436  
 william@greenciff.com.au  
 Sharon Jing - 0420 978 303  
 sharon@greenciff.com.au

### Office Details

Greenciff Central Park Office  
 101/5 Carlton Street Chippendale NSW  
 2008 Australia  
 02 9199 6555

**greenciff**  
 Inner city specialists

The above information provided has been furnished to us by the vendor/s. We have not verified whether or not that information is accurate and do not have any belief in one way or the other in its accuracy. We do not accept any responsibility to any person for its accuracy and do no more than pass it on. All interested parties should make and rely upon their own inquiries in order to determine whether or not this information is in fact accurate.