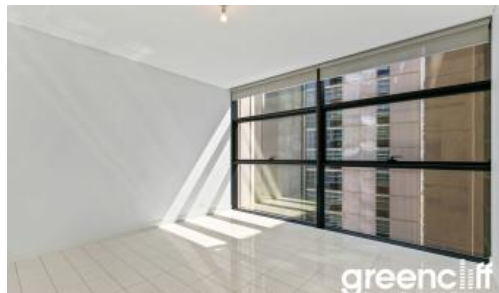


Leased



101 Bathurst Street, Sydney

greenciff



greenciff



greenciff



greenciff

## Freshly painted one bedroom suite at Lumiere Residences

Modern unfurnished suite on level 25 of the Lumiere Residence

This apartment is larger than a conventional suite and intelligently designed with completely separate bedroom and ensuite

With floor to ceiling windows the property is light, spacious and enjoys a city view

Kitchen comes with fridge, oven/microwave, dishwasher, and gas cooking top

Bathroom detailing is exceptional, with backlit glass splashbacks

Internal laundry with washer/dryer

Lumiere features:

- 24 hour security/concierge
- 50 metre lap pool, spa, sauna and steam room
- Lounge area
- 2 x cinemas

The above information provided has been furnished to us by the vendor/s. We have not verified whether or not that information is accurate and do not have any belief in one way or the other in its accuracy. We do not accept any responsibility to any person for its accuracy and do no more than pass it on. All interested parties should make and rely upon their own inquiries in order to determine whether or not this information is in fact accurate.

1 bed 1 bath

### Price

Level 25 | \$500 PW - Deposit Taken

### Property Type

Rental

Property ID4869

### Agent Details

Lieu Mai - 0415 797 525

lieu@greenciff.com.au

### Office Details

Greenciff Sydney Kent St  
Level 10/488 Kent Street Sydney NSW  
2000 Australia  
02 8823 8818

greenciff  
Inner city specialists