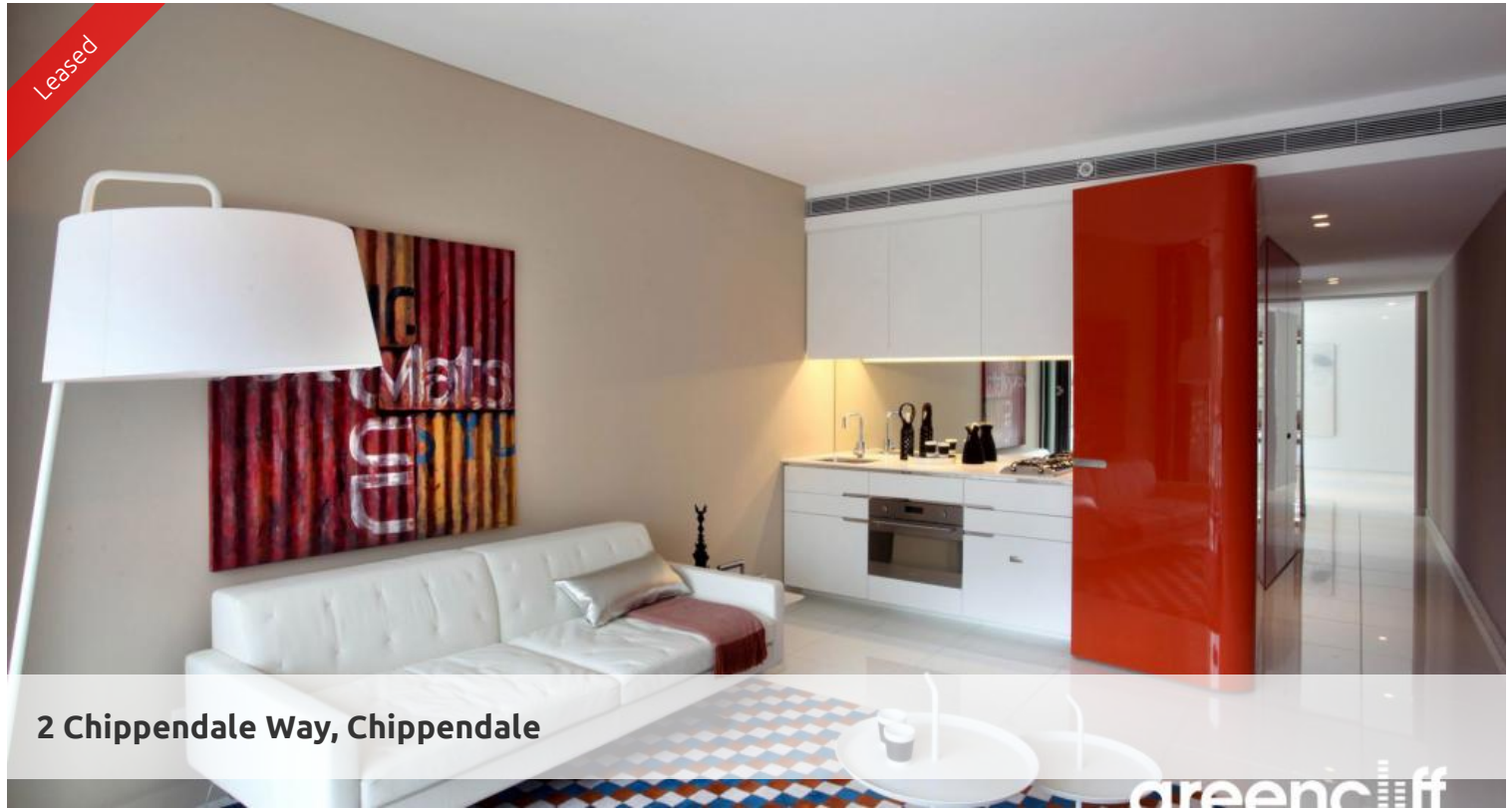


Leased



2 Chippendale Way, Chippendale

greenciff



SUN DRENCHED ONE BEDROOM SUITE

Please meet at our office on 5 Carlton Street, Chippendale a few minutes before to register and inspect.

One Central Park is inner city living at its best!

Enjoy the convenience of shopping, entertainment, dining and transport right at your doorstep. Built around a beautiful park and draped in a living vertical garden, One Central Park is the perfect combination of luxury meeting nature.

Rich in amenities, this Central Park development features:

- Luxury apartments with stainless steel appliances
- Tiled floor
- Security building with 24 hour concierge
- Fitness centre with pool, gymnasium & spa
- 6 star green rated development
- 5 level shopping centre with Woolworths
- North facing aspect
- Sun drenched
- Fridge and washer/dryer included
- More than 30,000sqm of surrounding park and public space.

For further information or to inspect, please call Nathan Sitou on 0466 110 429 or 9199 6555.

**** images used maybe indicatives only****

1 1

Price

Level 13 | DEPOSIT
TAKEN

Property Type

Rental

Property ID

4842

Agent Details

Office Details

Greenciff Central Park Office
101/5 Carlton Street Chippendale NSW
2008 Australia
02 9199 6555

greenciff
Inner city specialists

The above information provided has been furnished to us by the vendor/s. We have not verified whether or not that information is accurate and do not have any belief in one way or the other in its accuracy. We do not accept any responsibility to any person for its accuracy and do no more than pass it on. All interested parties should make and rely upon their own inquiries in order to determine whether or not this information is in fact accurate.