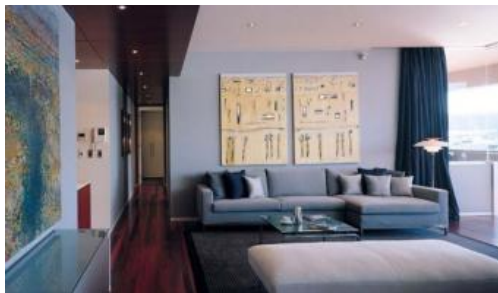


Leased

44, 501 Glebe Point Road, Glebe



Luxury waterfront apartment

Stunning 3 bedroom, 2 bathroom apartment in the "Pavilions on the Bay" development with glorious water views of Anzac Bridge, Blackwattle Bay and City Skyline. Features expansive deck, 3 oversized bedrooms (main with walk in robe) 2 elegant bathrooms, gourmet kitchen with quality European appliances, spacious lounge/ dining with polished timber floors. This exceptional residence is complete with 2 secure car spaces and storage.

Set in a secure boutique building with concierge, pool, spa, gym and sauna, located moments from harbourside parklands, transport and CBD.

The above information provided has been furnished to us by the vendor/s. We have not verified whether or not that information is accurate and do not have any belief in one way or the other in its accuracy. We do not accept any responsibility to any person for its accuracy and do no more than pass it on. All interested parties should make and rely upon their own inquiries in order to determine whether or not this information is in fact accurate.

3 2 2

Price	\$1150 per Week
Property Type	Rental
Property ID	48
Land Area	0 m2

Agent Details

William Chen - 0430 026 436
william@greenciff.com.au

Office Details

Greenciff Sydney Kent St
Level 10/488 Kent Street Sydney NSW
2000 Australia
02 8823 8818

greenciff
Inner city specialists