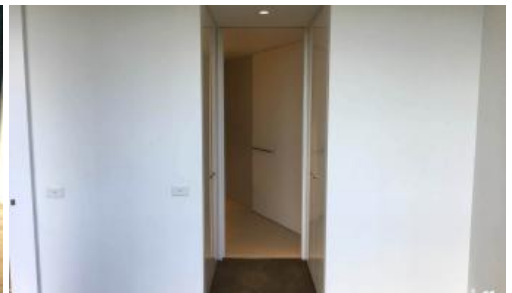


Leased

1915, 18 Park Lane, Chippendale



GYM+POOL ACCESS, AMPLE LIGHTING, AMAZING VIEWS - ONE BEDROOM IN CENTRAL PARK With 1 CAR SPACE

Please meet at our office 5 Carlton Street, Chippendale a few minutes before to register and inspect.

"The Mark is the future of vibrant inner city living and a shining example of all that advanced technologies and bold imaginations can contribute to modern and sustainable living"

Located at Central Park Chippendale, The Mark has direct access to a fully equipped gymnasium, an elevated outdoor pool and on your doorstep is an expansive tree lined park named Chippendale Green. Fashionable retail outlets, a Woolworths supermarket and various cafes and eateries such as Din Tai Fung available to your heart's content.

Moments to Central station, buses and surrounding Universities makes living at Central Park the ultimate in downtown living.

The Mark is the ultimate lifestyle precinct.

The apartments boast intelligent and lifestyle-savvy interiors, features

- Ducted air conditioning
- Open balcony for indoor/outdoor living with South aspect views
- Fridge and washer/dryer included
- European kitchen appliances/stone bench tops
- The latest bathroom fittings and design
- Timber flooring to the living areas/carpeted bedrooms
- Parking space included
- Security intercom system

The Mark offers

The Mark is situated on the rooftop with a spa, terrace spaces to relax

1 1 1

Price

L19 18 Park Lane | \$550-
\$600 PW

**Property
Type**

Rental

Property ID 4798

Agent Details

William Chen - 0430 026 436

william@greenciff.com.au

Vincent Phang - 02 9199 6557

vincent@greenciff.com.au

Office Details

Greenciff Central Park Office

101/5 Carlton Street Chippendale NSW

2008 Australia

02 9199 6555

greenciff
Inner city specialists