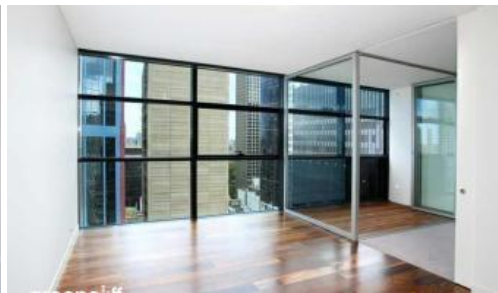


**101 Bathurst St, Sydney**



## East Facing Delight - spacious and bright

Located in the heart of Sydney's iconic Town Hall precinct, Lumiere at Regent Place is a residential village in the sky.

The apartment features

- Timber flooring throughout
- Roughly 67sqm with built in robe
- Modern kitchen & bathroom facilities
- Internal laundry
- Internal loggia
- Ducted air conditioning
- Full access to Club Lumiere and building facilities

Facilities include access to spectacular indoor/outdoor 50 & 20 metre pool, sauna, spa, gym, function room & 2 cinemas.

The above information provided has been furnished to us by the vendor/s. We have not verified whether or not that information is accurate and do not have any belief in one way or the other in its accuracy. We do not accept any responsibility to any person for its accuracy and do no more than pass it on. All interested parties should make and rely upon their own inquiries in order to determine whether or not this information is in fact accurate.

1 1

<b>Price</b>	Level 23   \$650 PW
<b>Property Type</b>	Rental
<b>Property ID</b>	4767

### Agent Details

Lieu Mai - 0415 797 525  
[lieu@greenciff.com.au](mailto:lieu@greenciff.com.au)

### Office Details

Greenciff Sydney Kent St  
 Level 10/488 Kent Street Sydney NSW  
 2000 Australia  
 02 8823 8818

**greenciff**  
 Inner city specialists